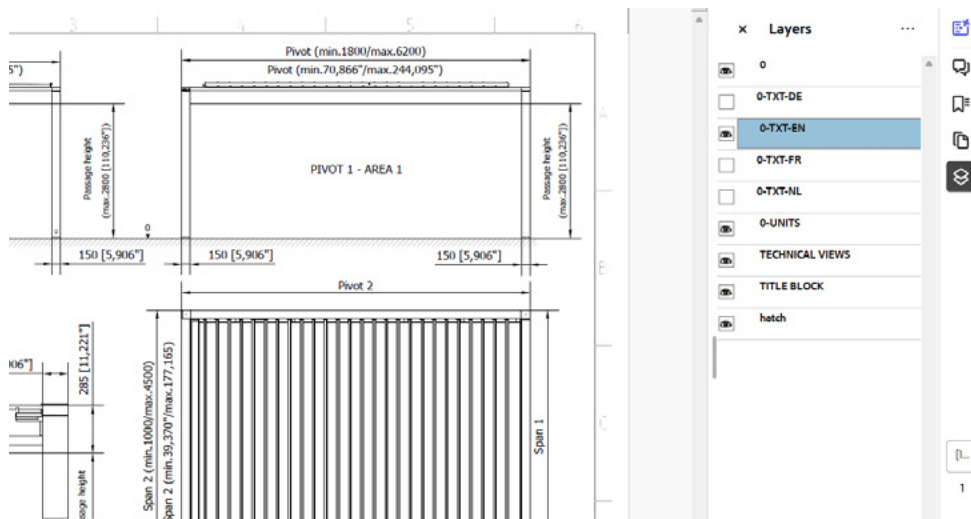


# TECHNICAL DRAWINGS AMANI



# ABOUT THIS DOCUMENT

This interactive PDF offers all the Amani technical drawings. On the next page you will find the index page with an overview of all available drawings. Click on the titles and you will be redirected to the correct page. When going through the drawings you'll find on the right bottom the Renson logo which leads you back to the index page. Next to that, each drawing has a link to download the PDF or DWG file.



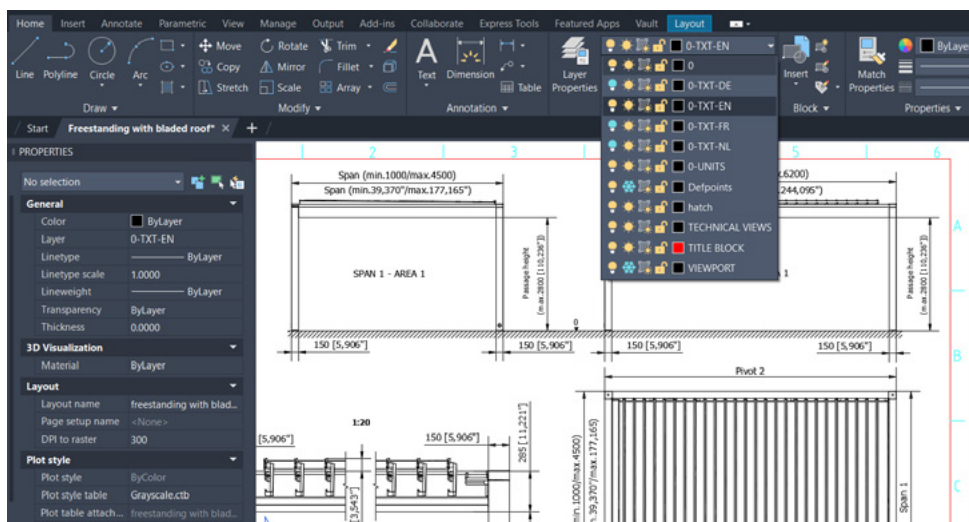
## HOW TO TURN ON/OFF LANGUAGES AND DIMENSION LAYERS

### - in PDF viewer

When opening the pdf document, notice several layers are standing over each other. Go to the right side of the pdf and click on the tab called 'layers'. A menu will appear with the different language and dimension layers. Turn layers on and off by clicking on the eye-icon next to the name of the layer.

### - in Autocad

Go to the 'layout' tab at the topbar. A menu will appear with the different layers. Turn layers on and off by clicking on the lightbulbs next to the name of the layer.



# INDEX

## CONSTRUCTION

### TYPE OF PERGOLA

- Freestanding bladed roof
- Freestanding fixed roof
- Freestanding empty roof
- Façade mounting pivot
- Façade mounting span
- 2 parts coupled at span or pivot side
- 3 parts coupled at span or pivot side
  - Section span or pivot beam
- Section span or pivot with zone A
- Section awning
- Section coupled beam
- Wall fixation

### MOUNTING BASES

- Visible mounting base
- Visible mounting base - corner
- Invisible mounting base

### WATER DRAINAGE

- Sideways water drainage

## ACCESSORIES

### FIXSCREEN

- Integrated Fixscreen - stand alone span
- Integrated Fixscreen - stand alone pivot
- Integrated Fixscreen - facade mounting span
- Integrated Fixscreen - facade mounting pivot

### OUTDOOR LOGGIA - INFILL IN FRONT OF THE FRAME

- Outdoor Loggia - fixed panel
- Outdoor Loggia - sliding panel
- Outdoor Loggia - folding panels

### OUTDOOR LOGGIA - INFILL UNDER THE FRAME

- Outdoor Loggia - fixed panels
- Outdoor Loggia - 2 sliding panels
- Outdoor Loggia - 4 sliding panels
- Outdoor Loggia - 6 sliding panels

### GLASS SLIDING PANELS

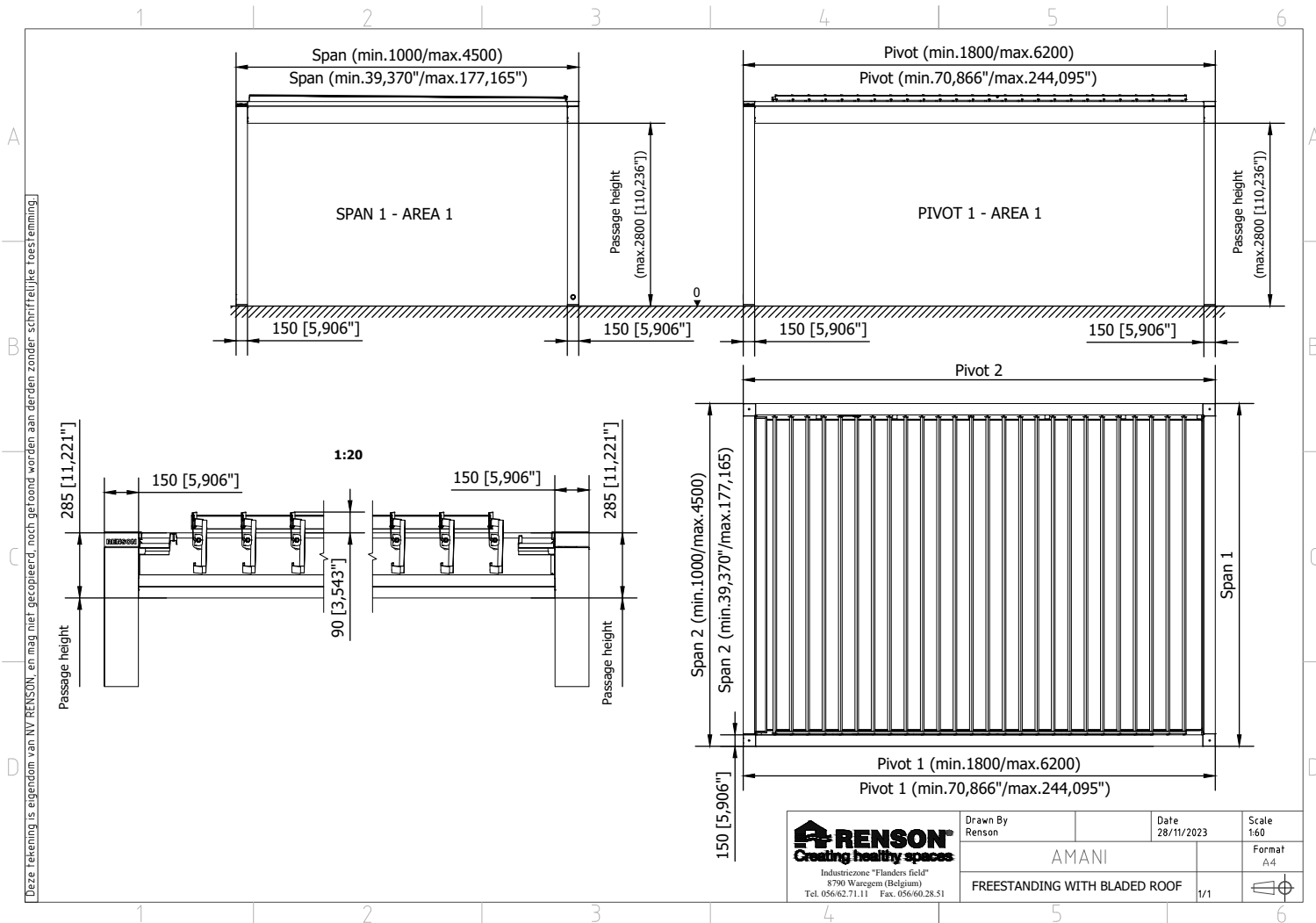
- Glass sliding panels - stand alone with 4 tracks
- Glass sliding panels - stand alone with 5 tracks
- Glass sliding panels - facade mounting with 3 tracks

### FIXED WALL

- Linarte wall with door L/R
- Linarte wall with door L/R - details
- Linarte wall with door in the middle
- Linarte wall with door in the middle - details
- Linarte wall with louvred canopy

### CURTAIN

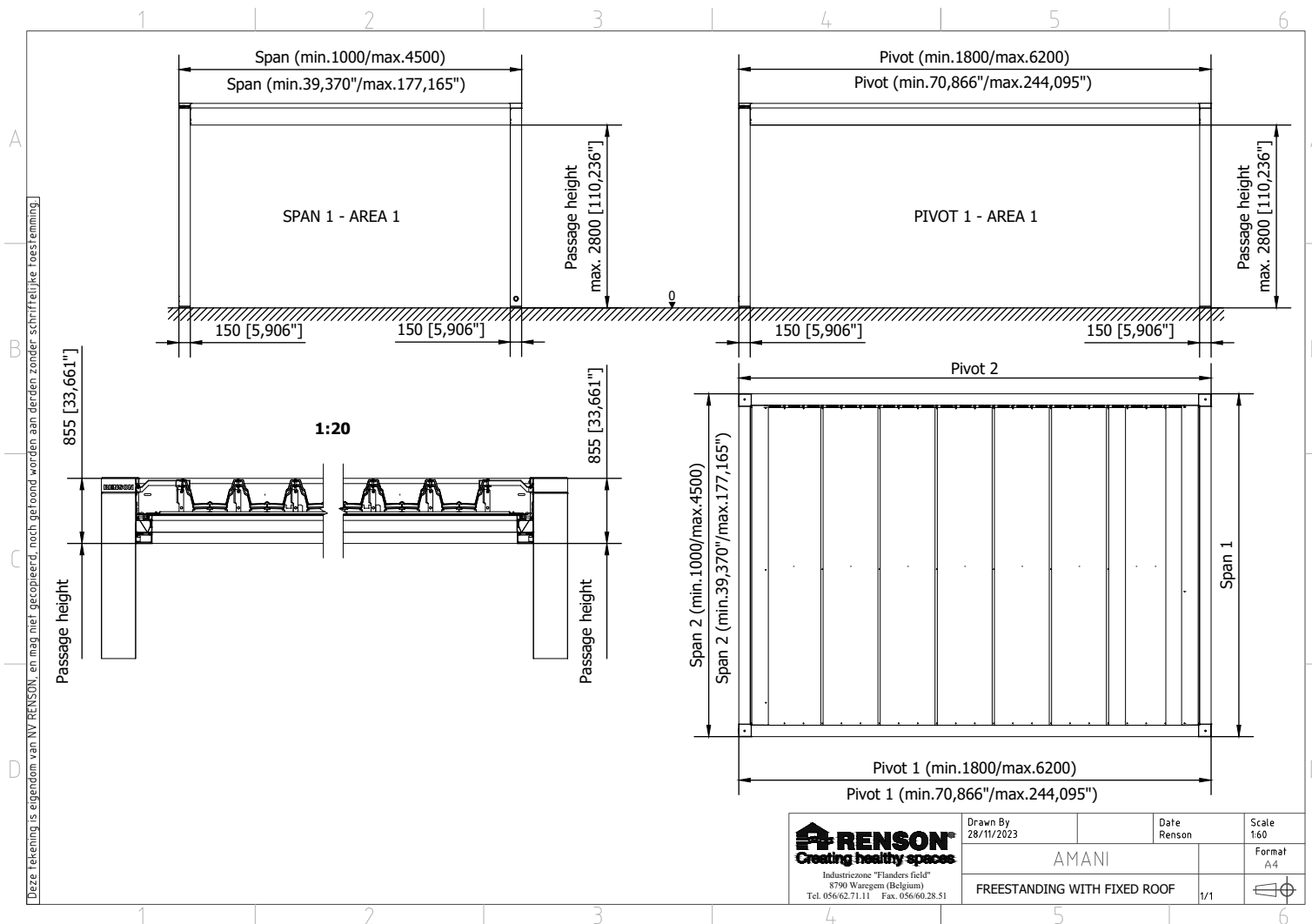
# Amani - FREESTANDING WITH BLADED ROOF



Download this drawing DWG

Download this drawing PDF

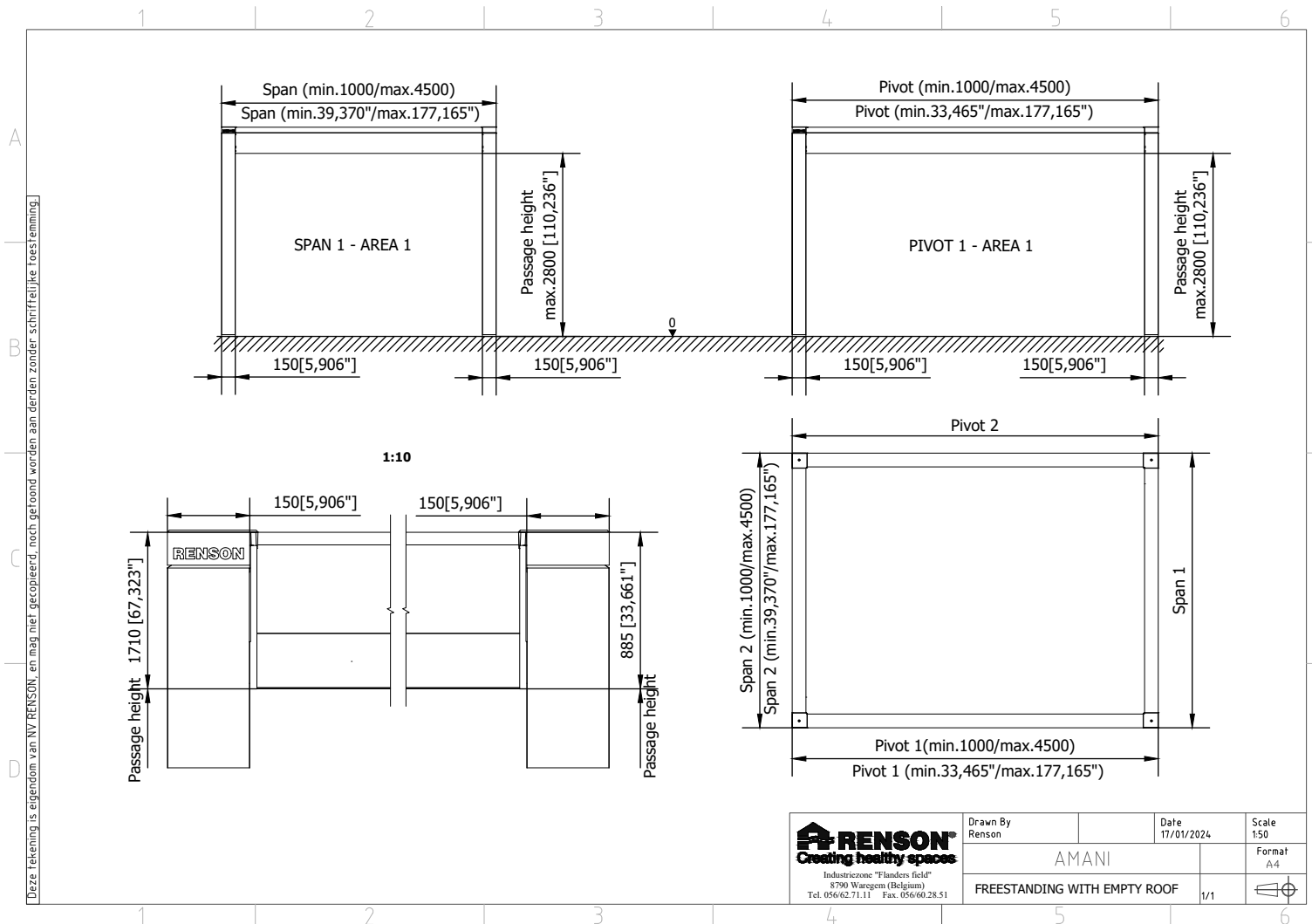
# Amani - FREESTANDING WITH FIXED ROOF



Download this drawing DWG

Download this drawing PDF

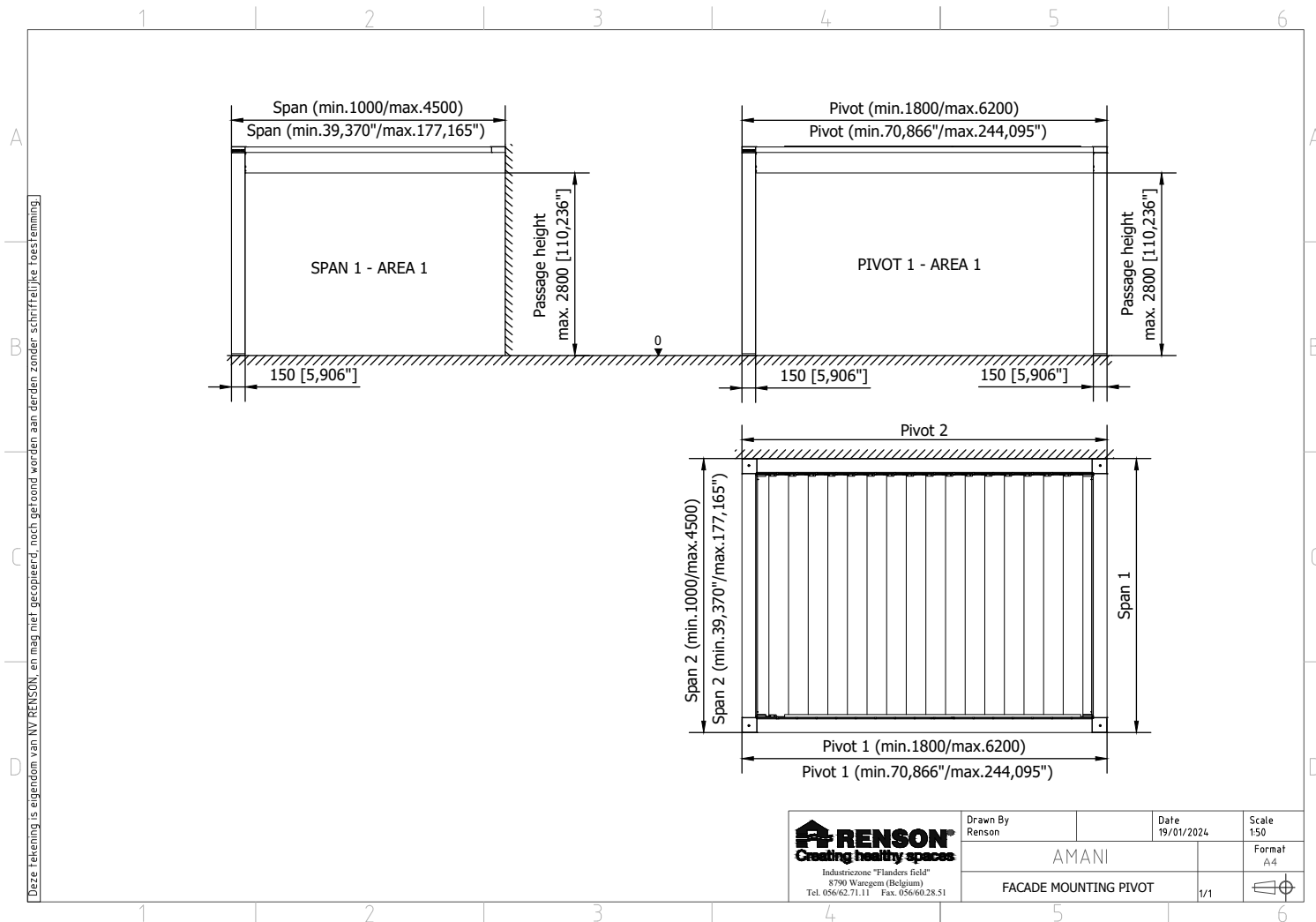
# Amani - FREESTANDING WITH EMPTY ROOF



Download this drawing DWG

Download this drawing PDF

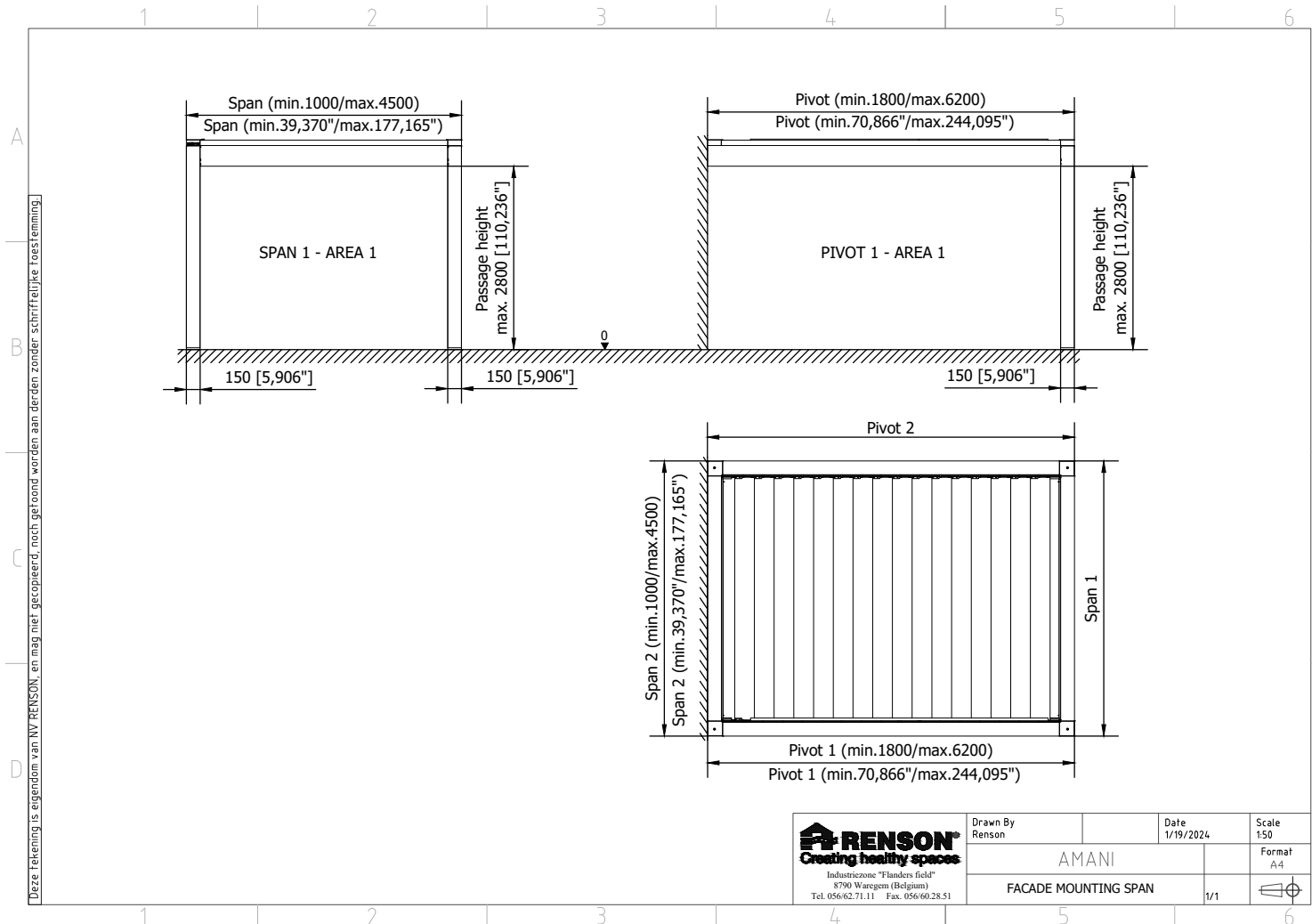
# Amani - FAÇADE MOUNTING PIVOT



Download this drawing DWG

Download this drawing PDF

# Amani - FAÇADE MOUNTING SPAN

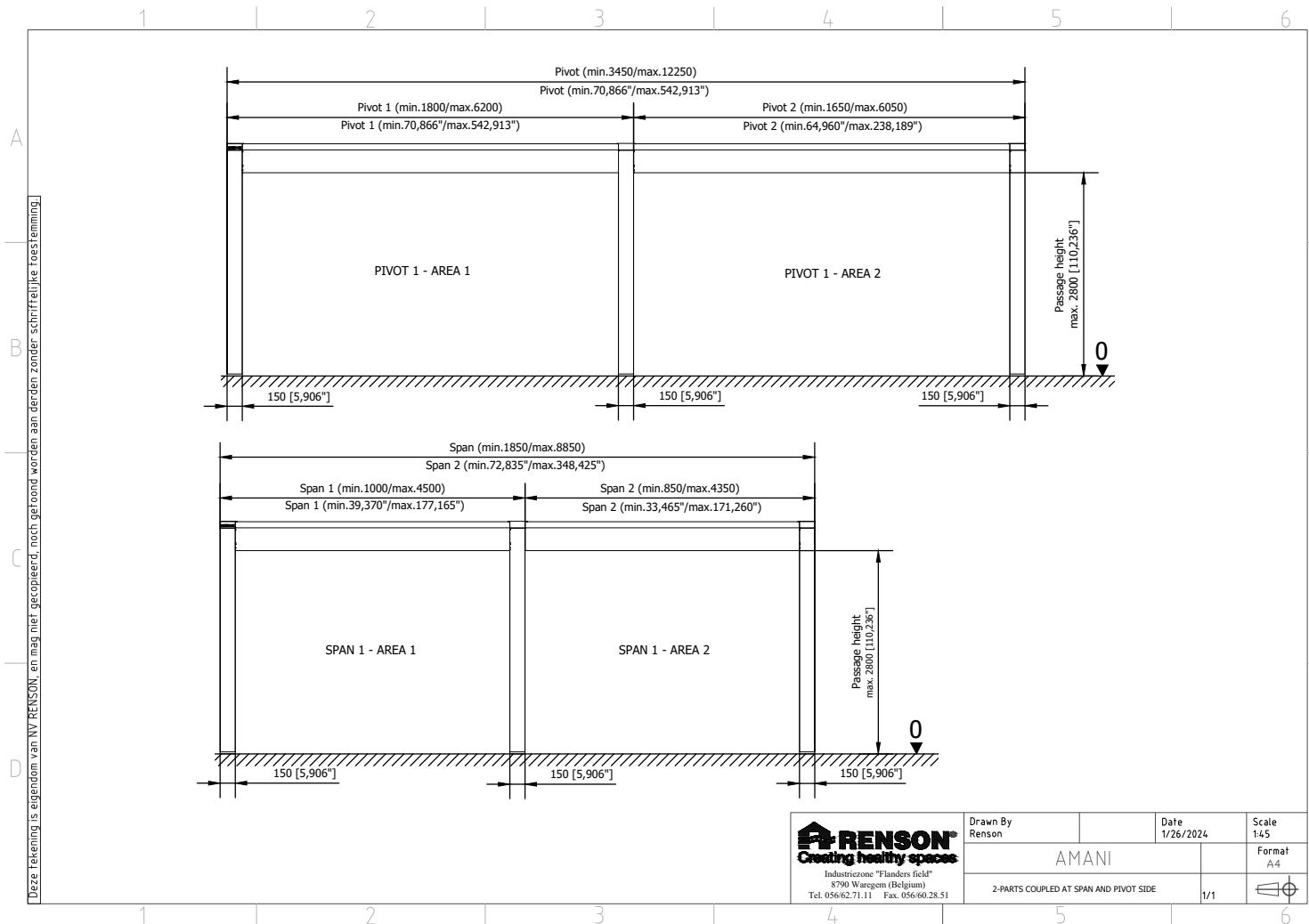


Download this drawing DWG

Download this drawing PDF



# Amani - 2 PARTS COUPLED AT SPAN OR PIVOT SIDE



Deze tekening is eigendom van NV RENSON, en mag niet gecopieerd, noch getoond worden aan derden zonder schriftelijke toestemming.

**RENSON**  
 Creating healthy spaces  
 Industriezone "Flanders field"  
 8790 Waregem (Belgium)  
 Tel. 056/62.71.11 Fax. 056/60.28.51

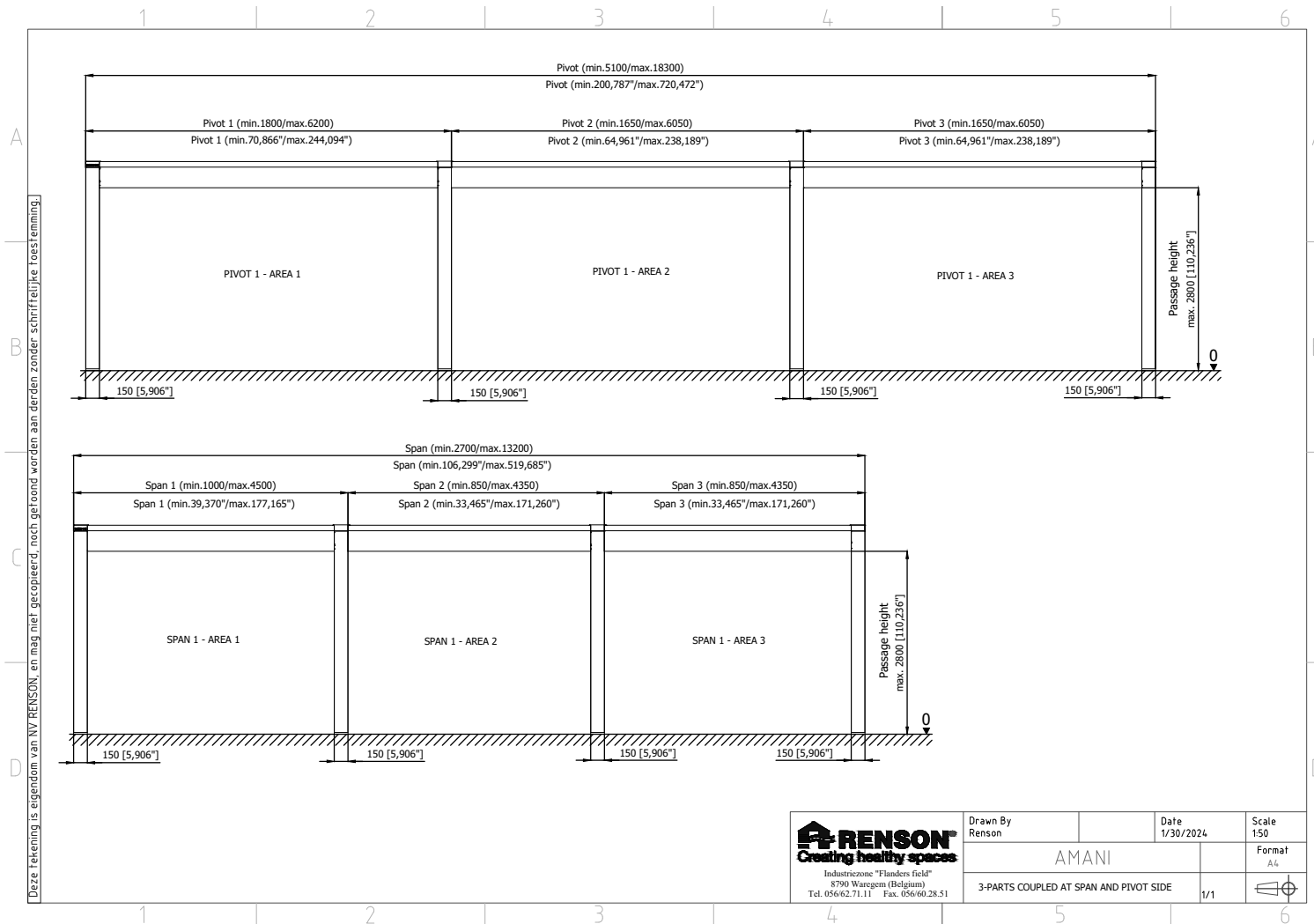
|  |                   |               |
|--|-------------------|---------------|
| Drawn By<br>Renson                     | Date<br>1/26/2024 | Scale<br>1:45 |
| AMANI                                  |                   | Format<br>A4  |
| 2-PARTS COUPLED AT SPAN AND PIVOT SIDE |                   | 1/1           |

Download this drawing DWG

Download this drawing PDF



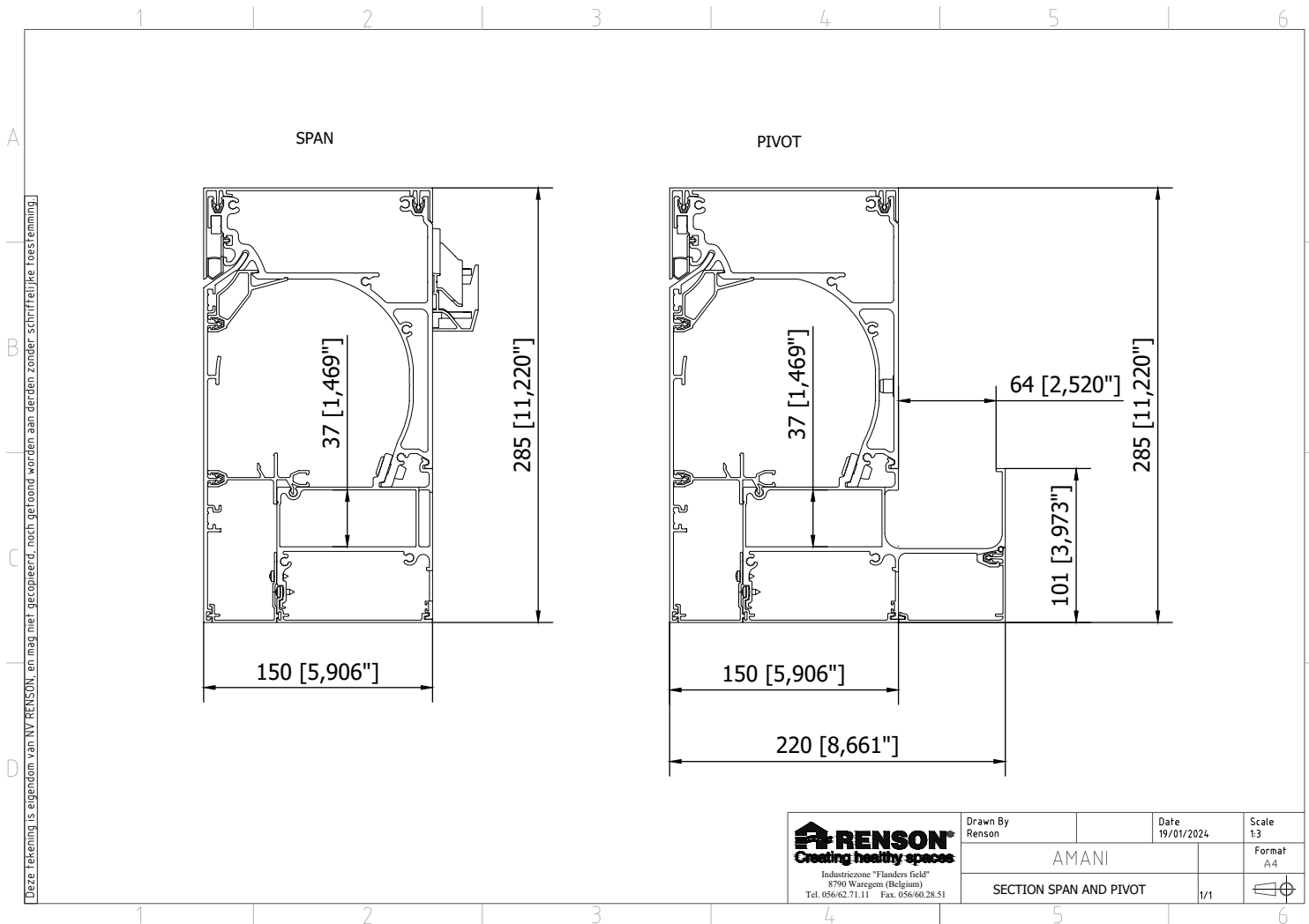
# Amani - 3 PARTS COUPLED AT SPAN OR PIVOT SIDE



Download this drawing DWG

Download this drawing PDF

# Amani - SECTION SPAN OR PIVOT BEAM



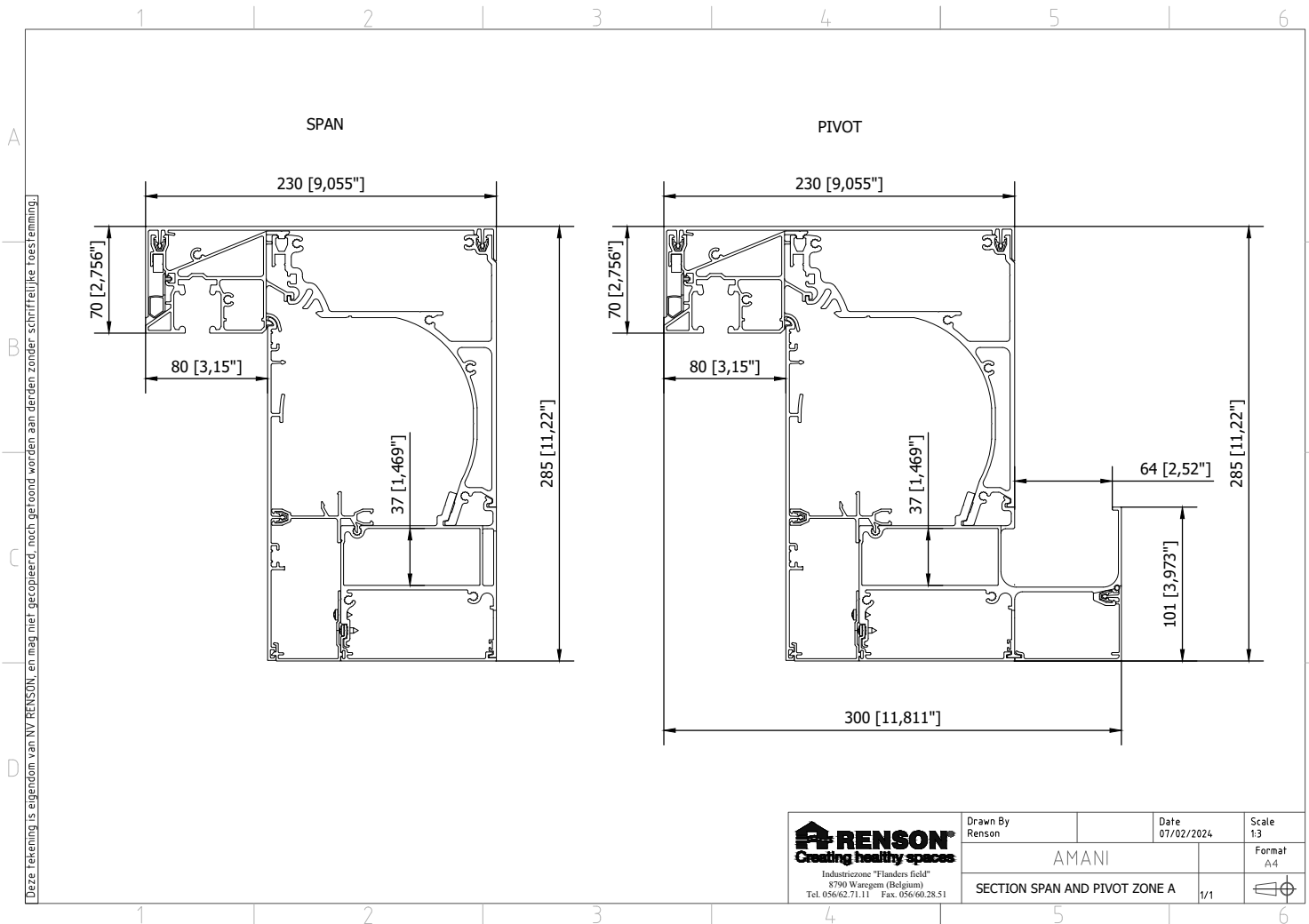
**RENSON**  
 Creating healthy spaces  
 Industriezone "Flanders Field"  
 8790 Waregem (Belgium)  
 Tel. 056/62.71.11 - Fax. 056/60.28.51

|                        |                    |              |
|------------------------|--------------------|--------------|
| Drawn By<br>Renson     | Date<br>19/01/2024 | Scale<br>1:3 |
| AMANI                  |                    | Format<br>A4 |
| SECTION SPAN AND PIVOT |                    | 1/1          |

Download this drawing DWG

Download this drawing PDF

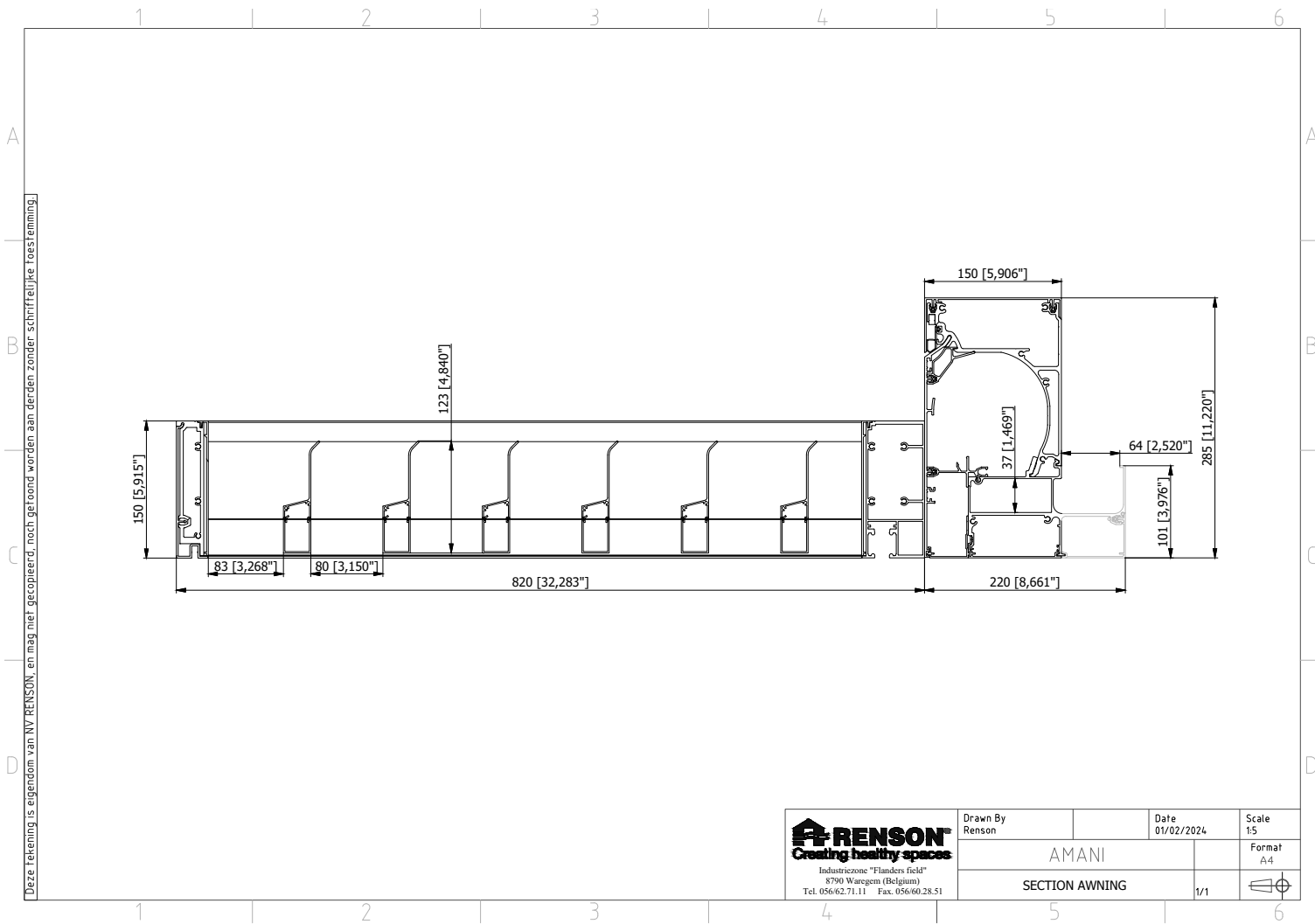
# Amani - SECTION SPAN OR PIVOT WITH ZONE A



Download this drawing DWG

Download this drawing PDF

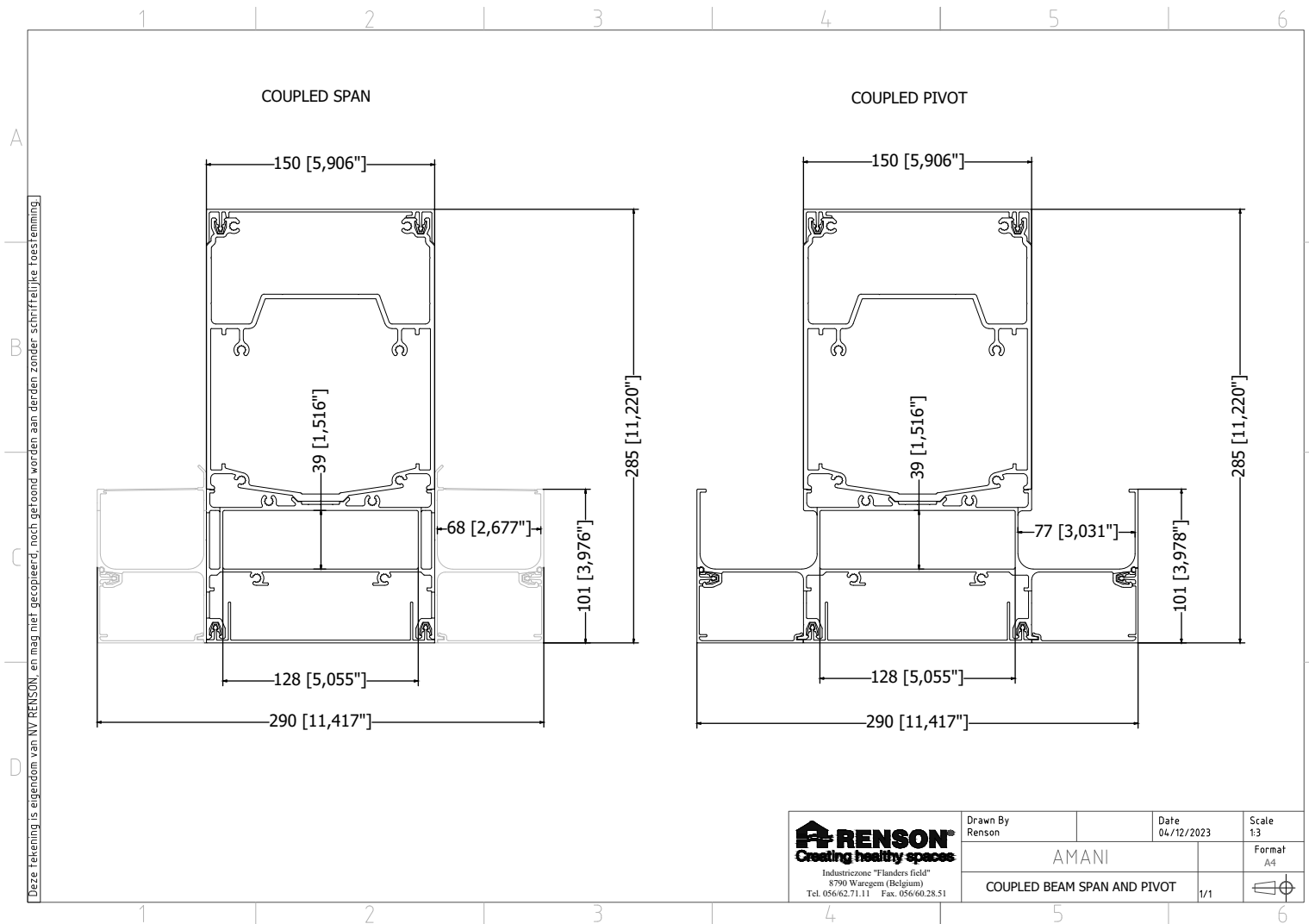
# Amani - SECTION AWNING



Download this drawing DWG

Download this drawing PDF

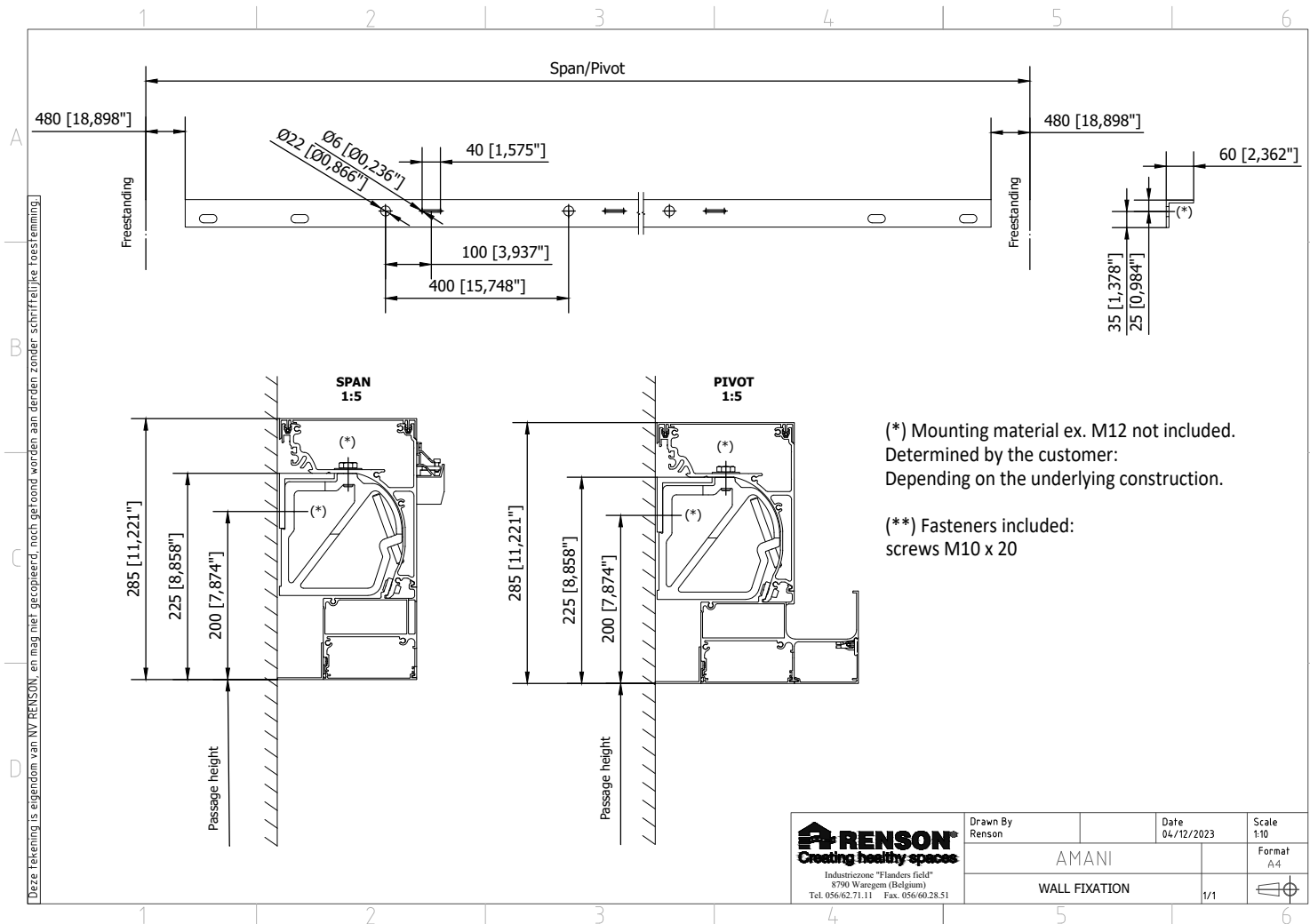
# Amani - SECTION COUPLED BEAM



Download this drawing DWG

Download this drawing PDF

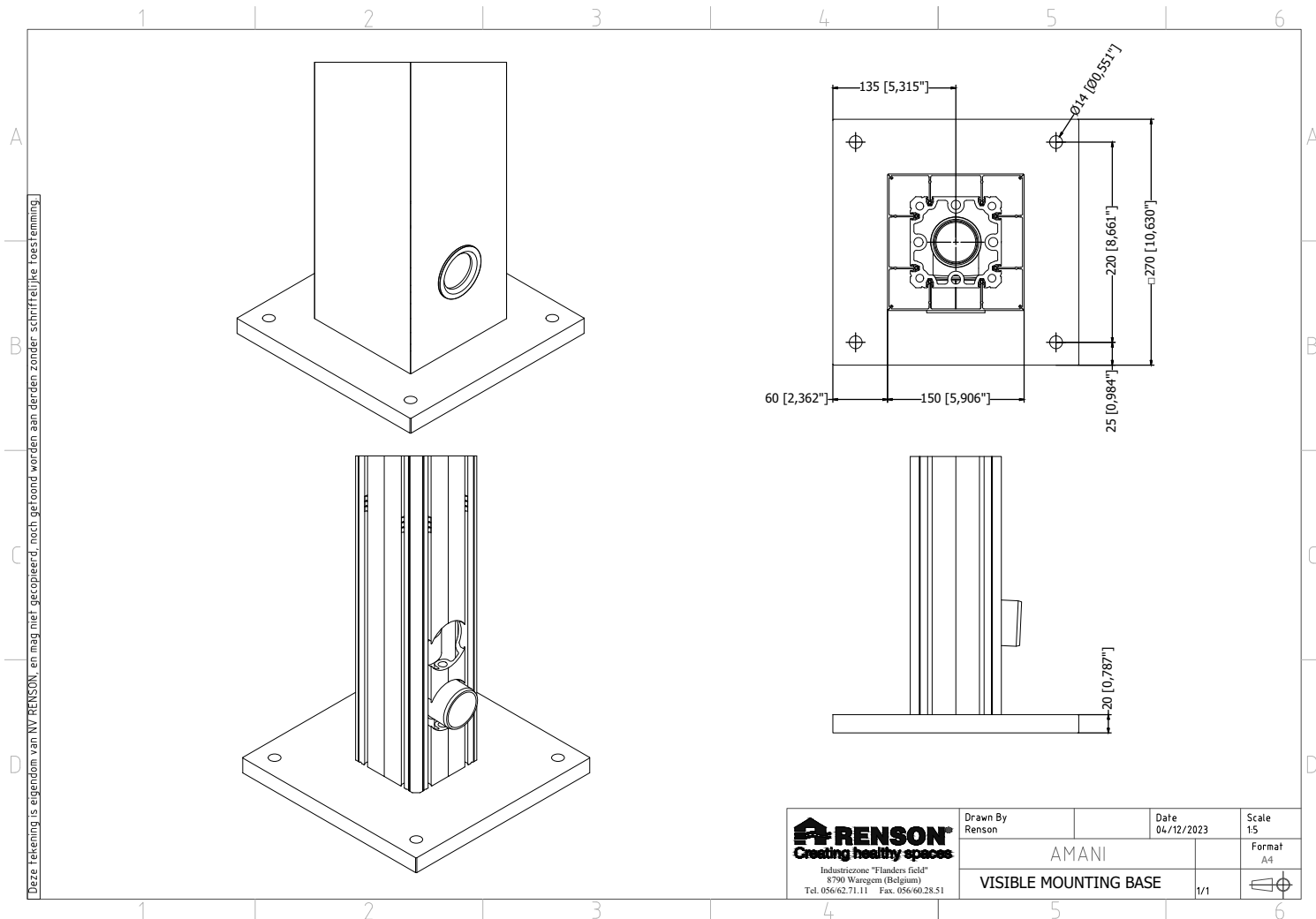
# Amani - WALL FIXATION



Download this drawing DWG

Download this drawing PDF

# Amani - VISIBLE MOUNTING BASE



Dezer tekening is eigendom van NV RENSON, en mag niet gecopieerd, noch getoond worden aan derden zonder schriftelijke toestemming.

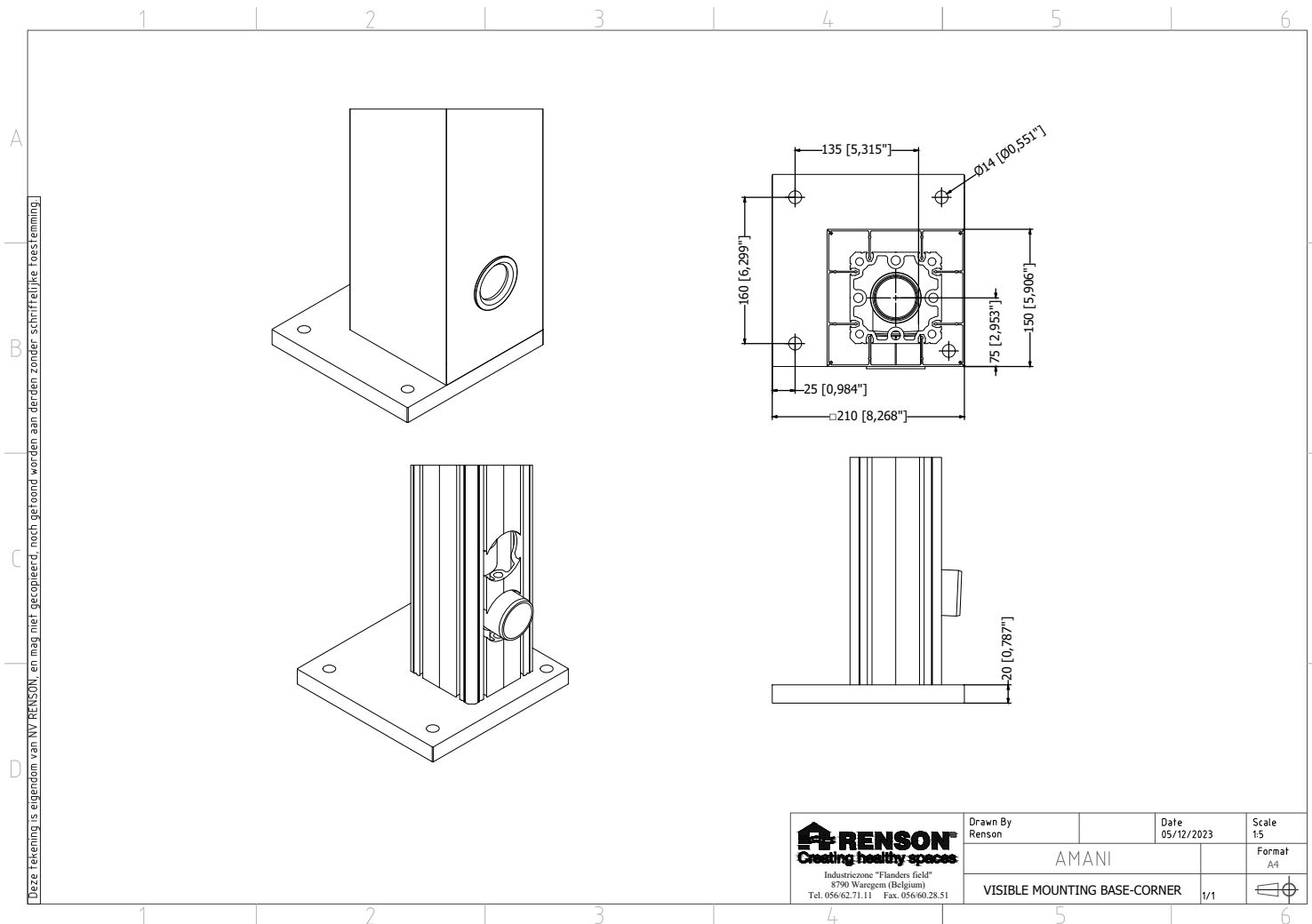
|   |                    |                    |              |
|---|--------------------|--------------------|--------------|
| <br>Creating healthy spaces<br>Industrieweg "Flanders Field"<br>8790 Waregem (Belgium)<br>Tel. 056/62.71.11 Fax. 056/60.28.51 | Drawn By<br>Renson | Date<br>04/12/2023 | Scale<br>1:5 |
|   | AMANI              |                    | Format<br>A4 |
| VISIBLE MOUNTING BASE   |                    | 1/1                |              |

Download this drawing DWG

Download this drawing PDF



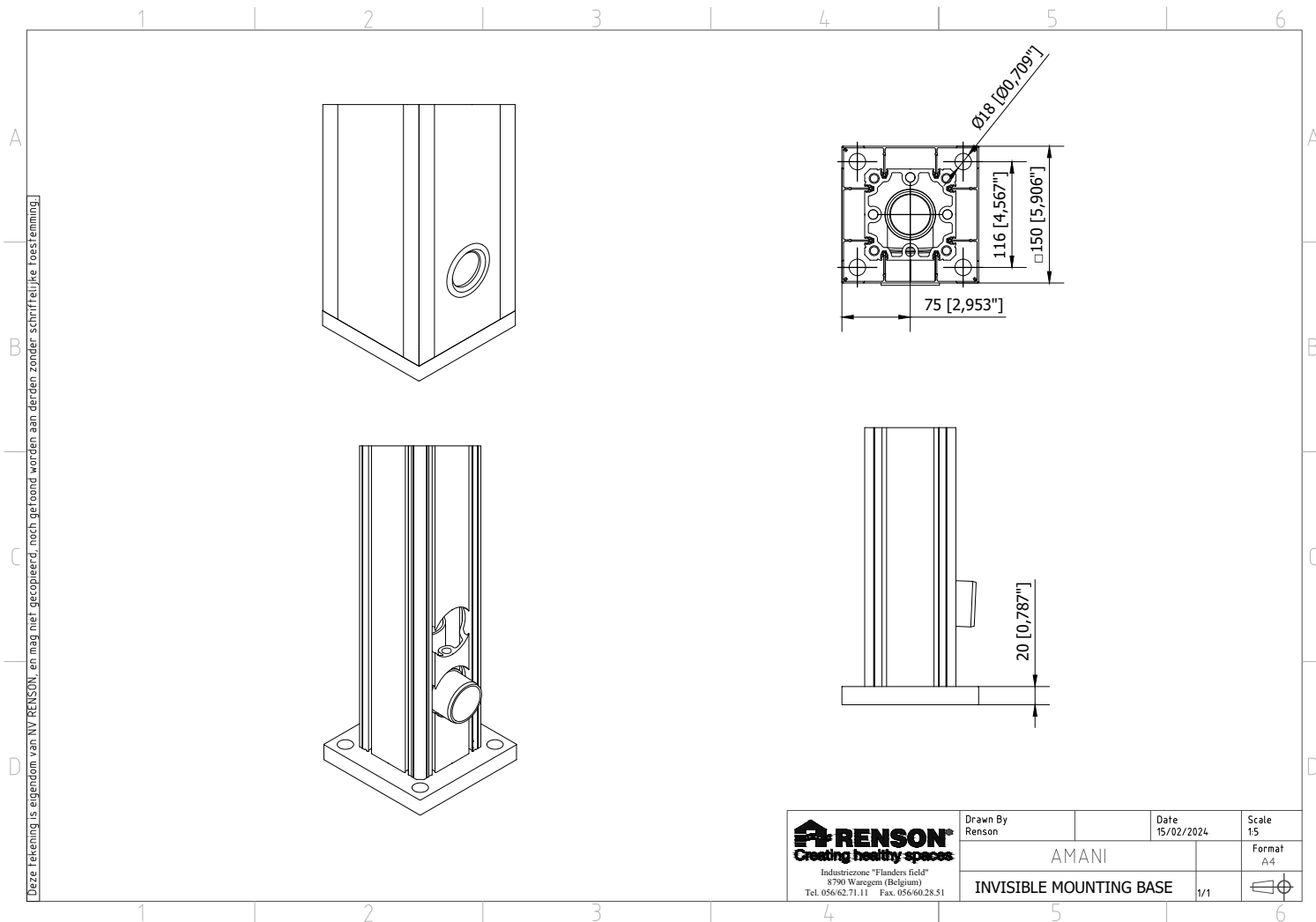
# Amani - VISIBLE MOUNTING BASE CORNER



Download this drawing DWG

Download this drawing PDF

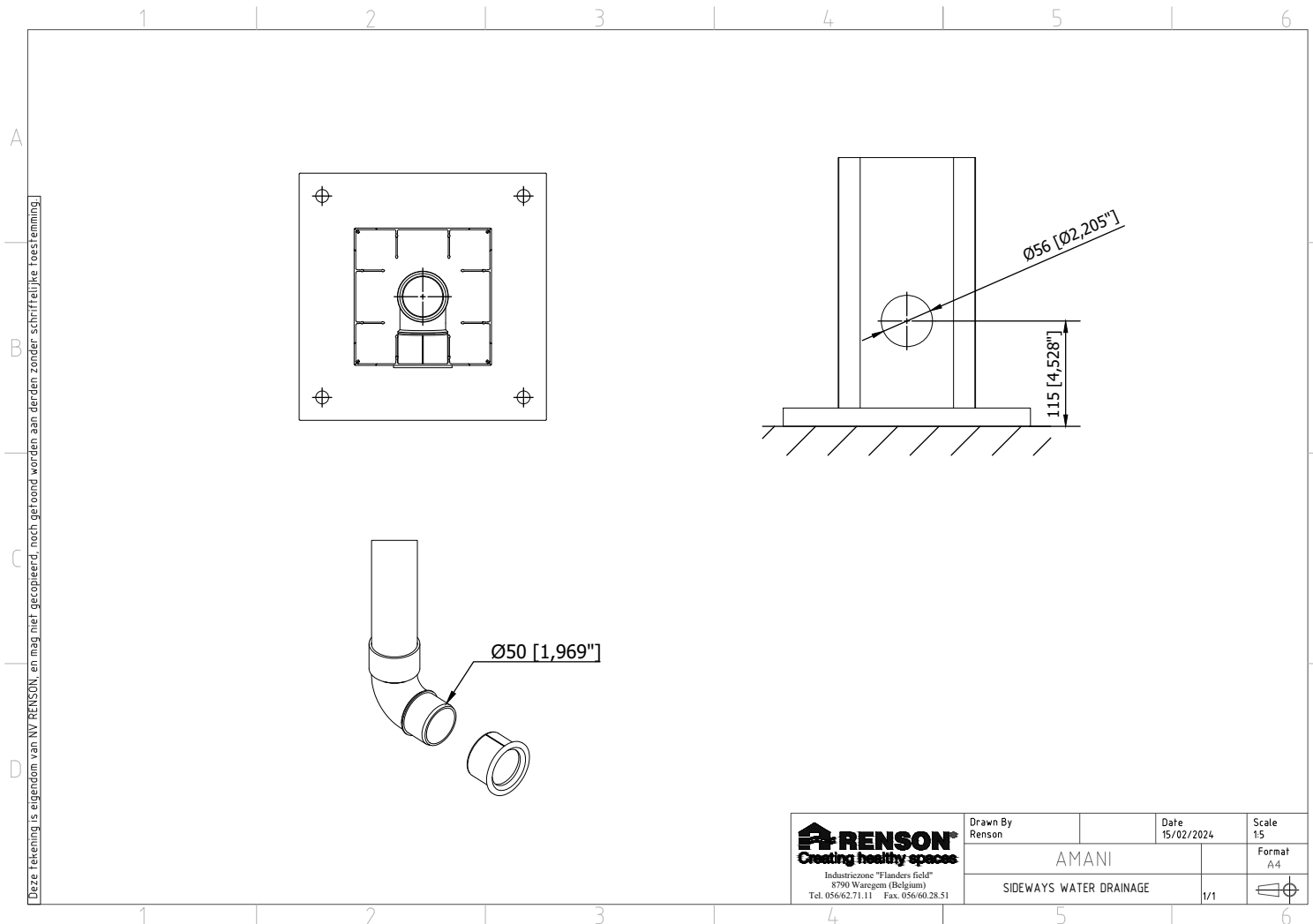
# Amani - INVISIBLE MOUNTING BASE



Download this drawing DWG

Download this drawing PDF

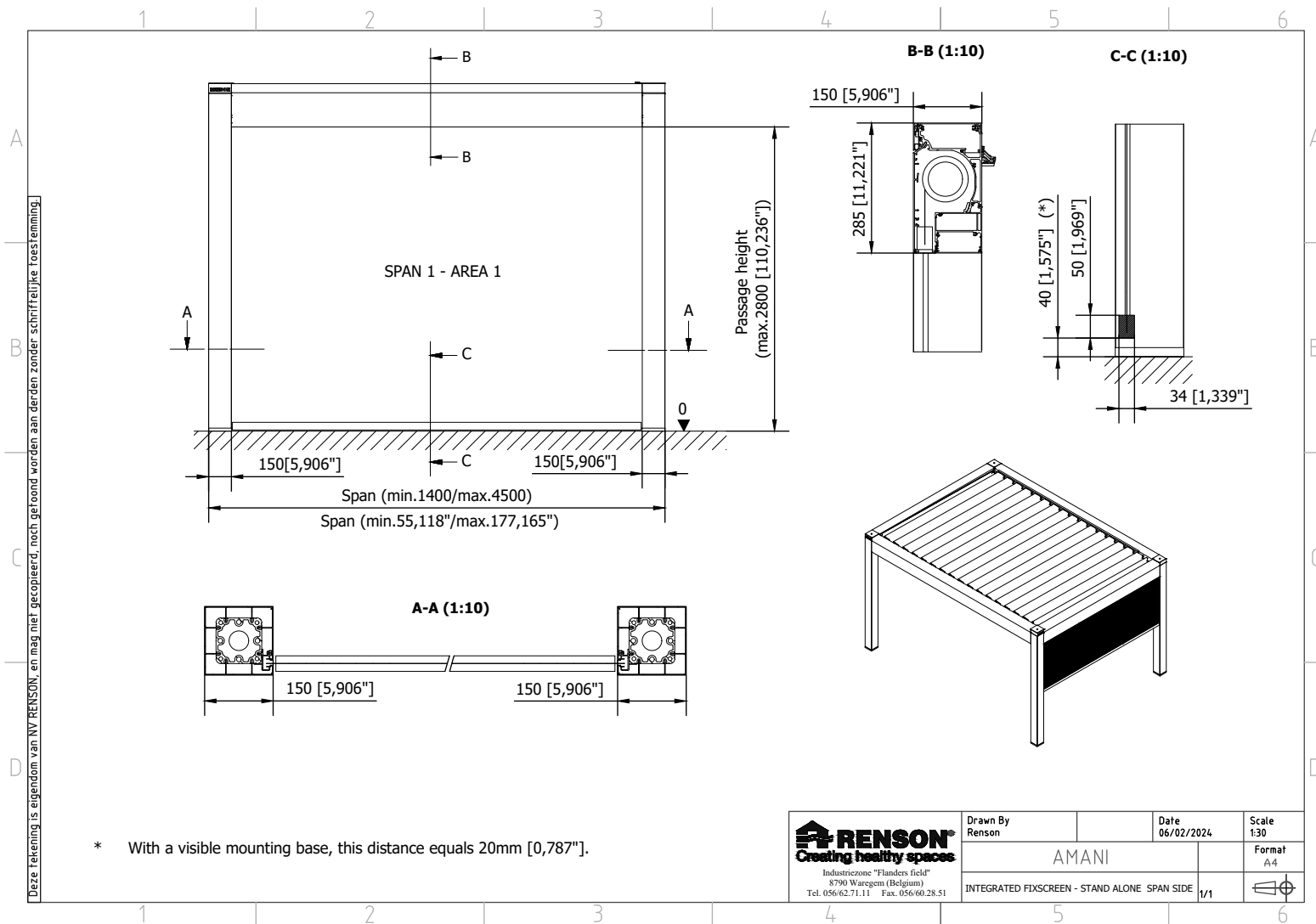
# Amani - SIDEWAYS WATER DRAINAGE



Download this drawing DWG

Download this drawing PDF

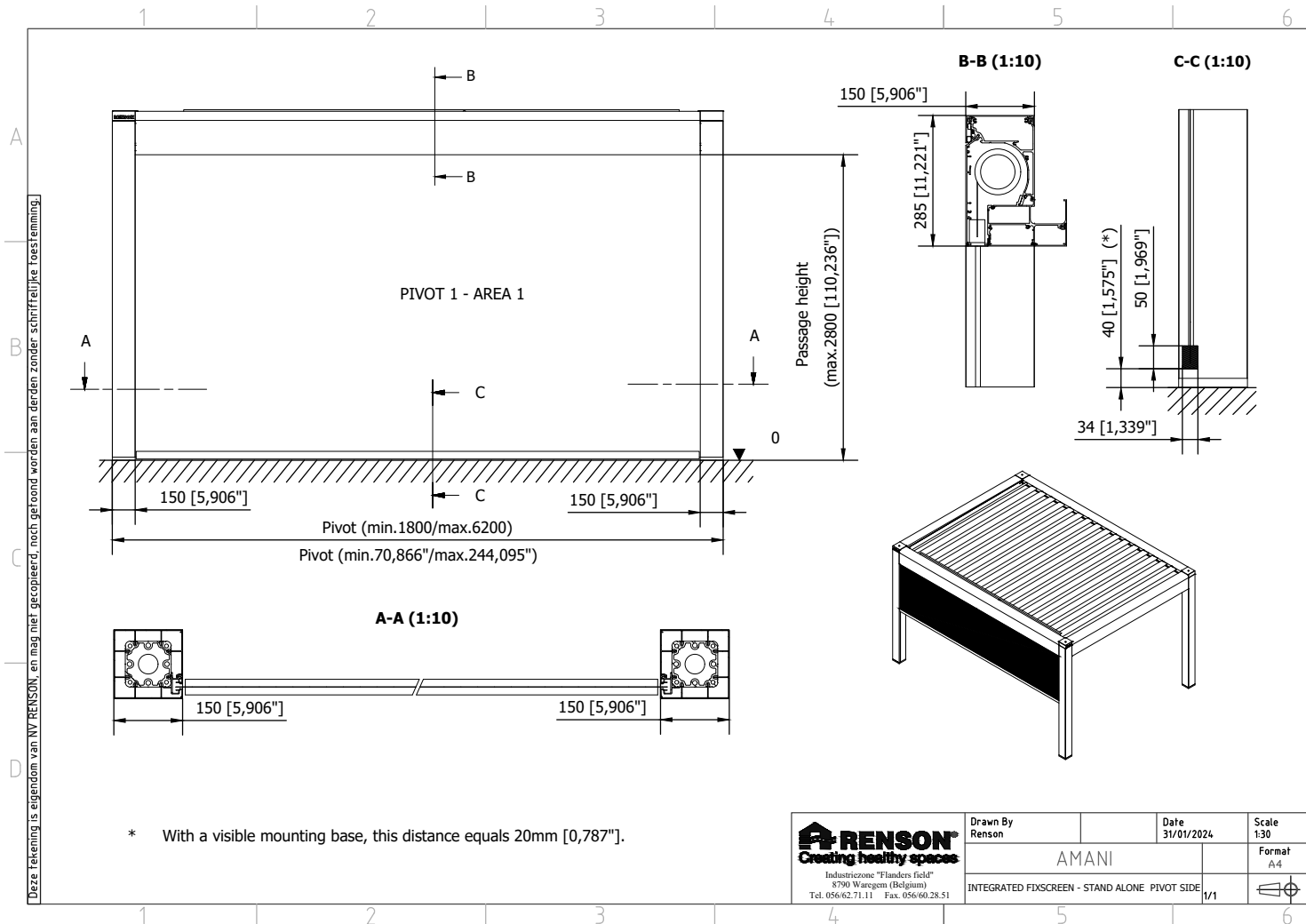
# Amani - INTEGRATED FIXSCREEN - STAND ALONE SPAN SIDE



Download this drawing DWG

Download this drawing PDF

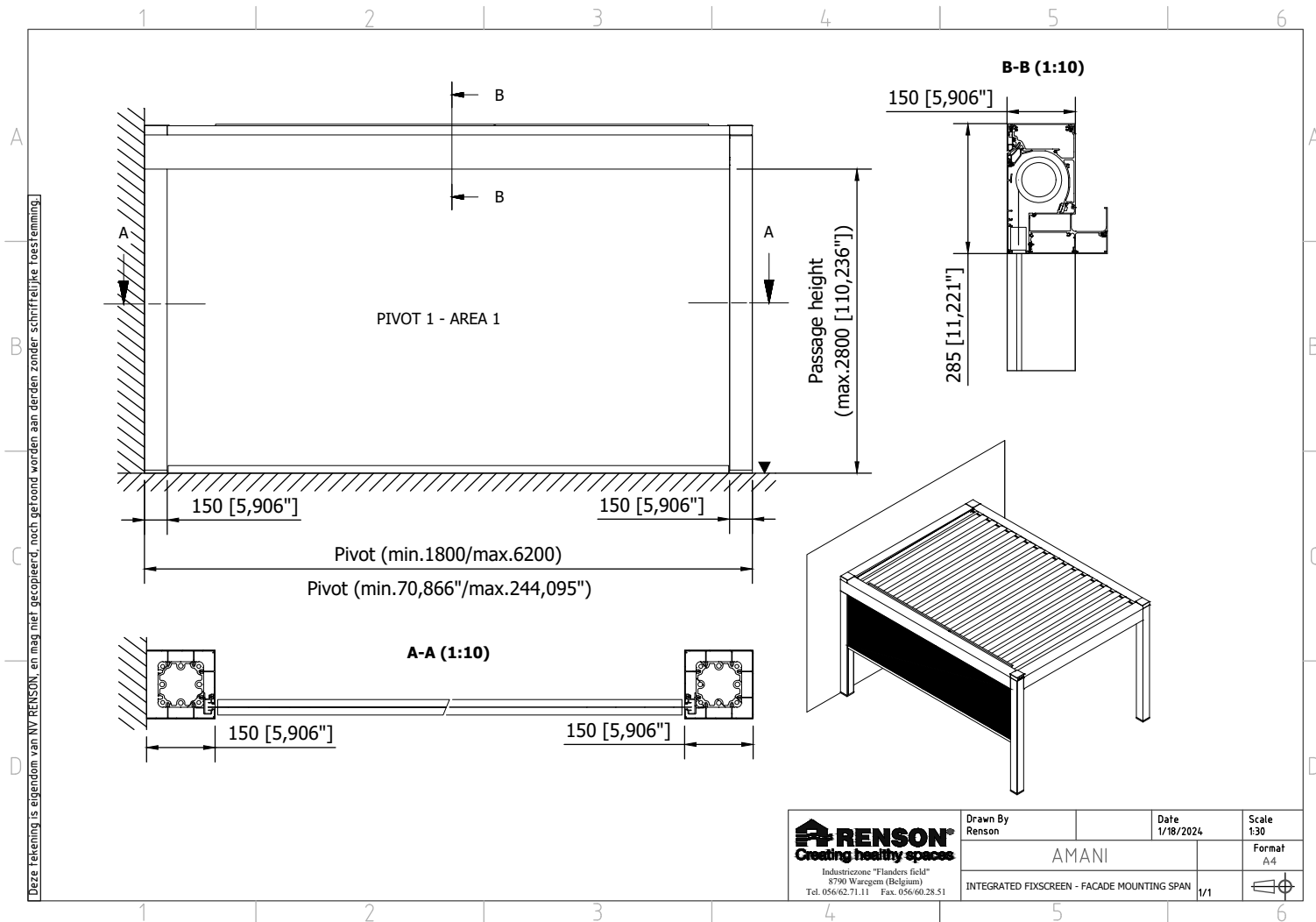
# Amani - INTEGRATED FIXSCREEN - STAND ALONE PIVOT SIDE



Download this drawing DWG

Download this drawing PDF

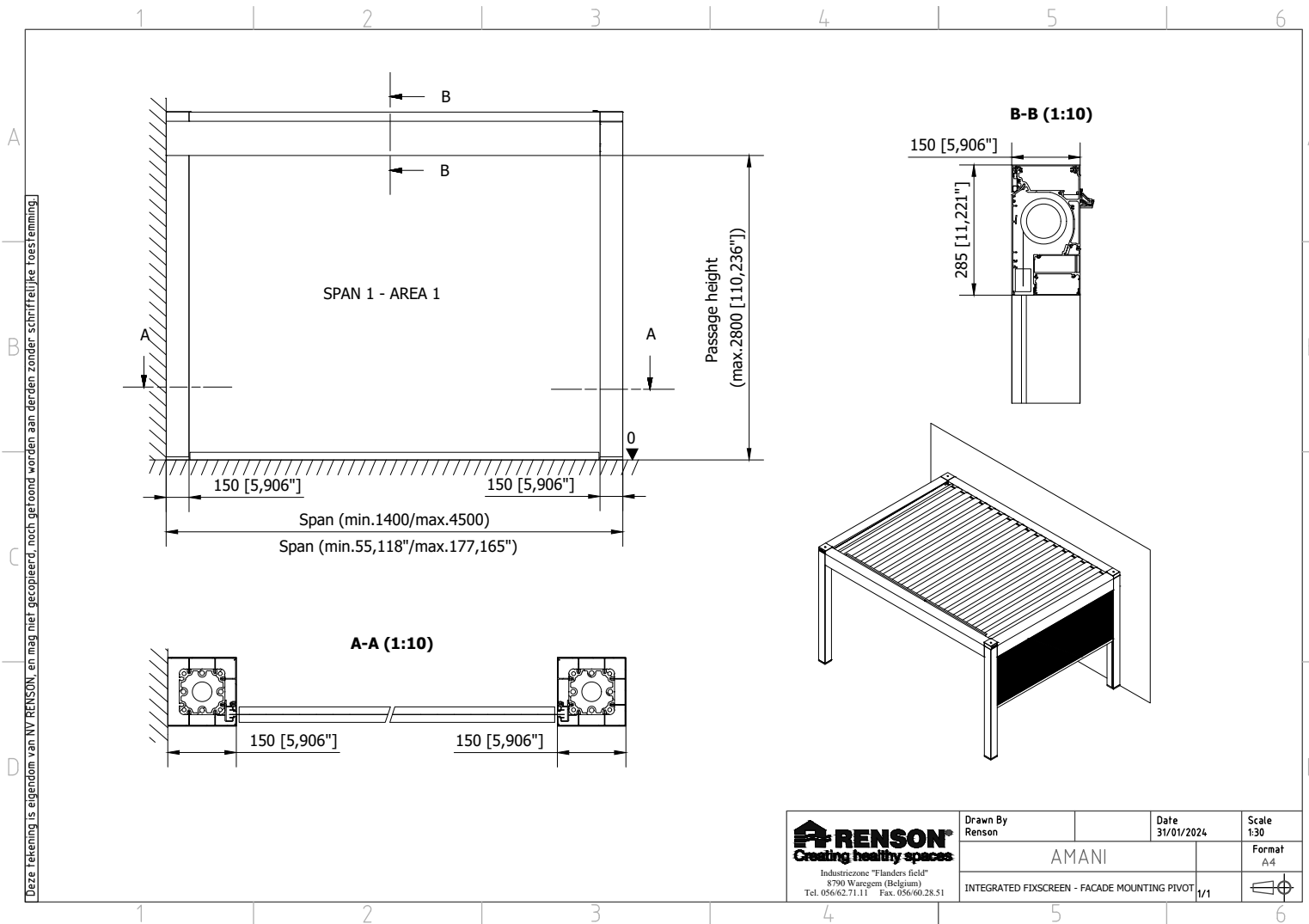
# Amani - INTEGRATED FIXSCREEN - FACADE MOUNTING SPAN



Download this drawing DWG

Download this drawing PDF

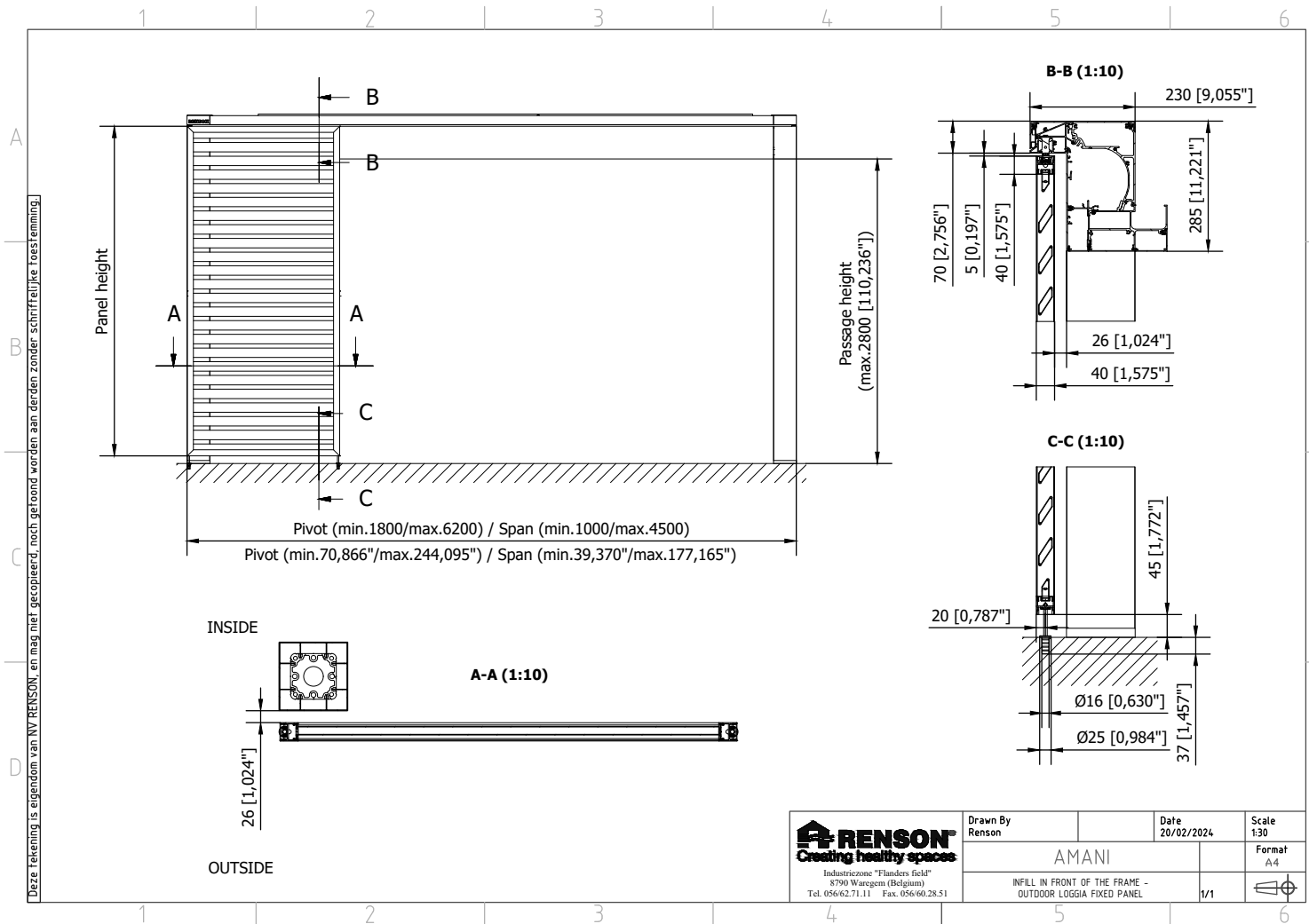
# Amani - INTEGRATED FIXSCREEN - FACADE MOUNTING PIVOT



Download this  
drawing DWG

Download this  
drawing PDF

# Amani - INFILL IN FRONT OF THE FRAME - OUTDOOR LOGGIA - FIXED PANEL

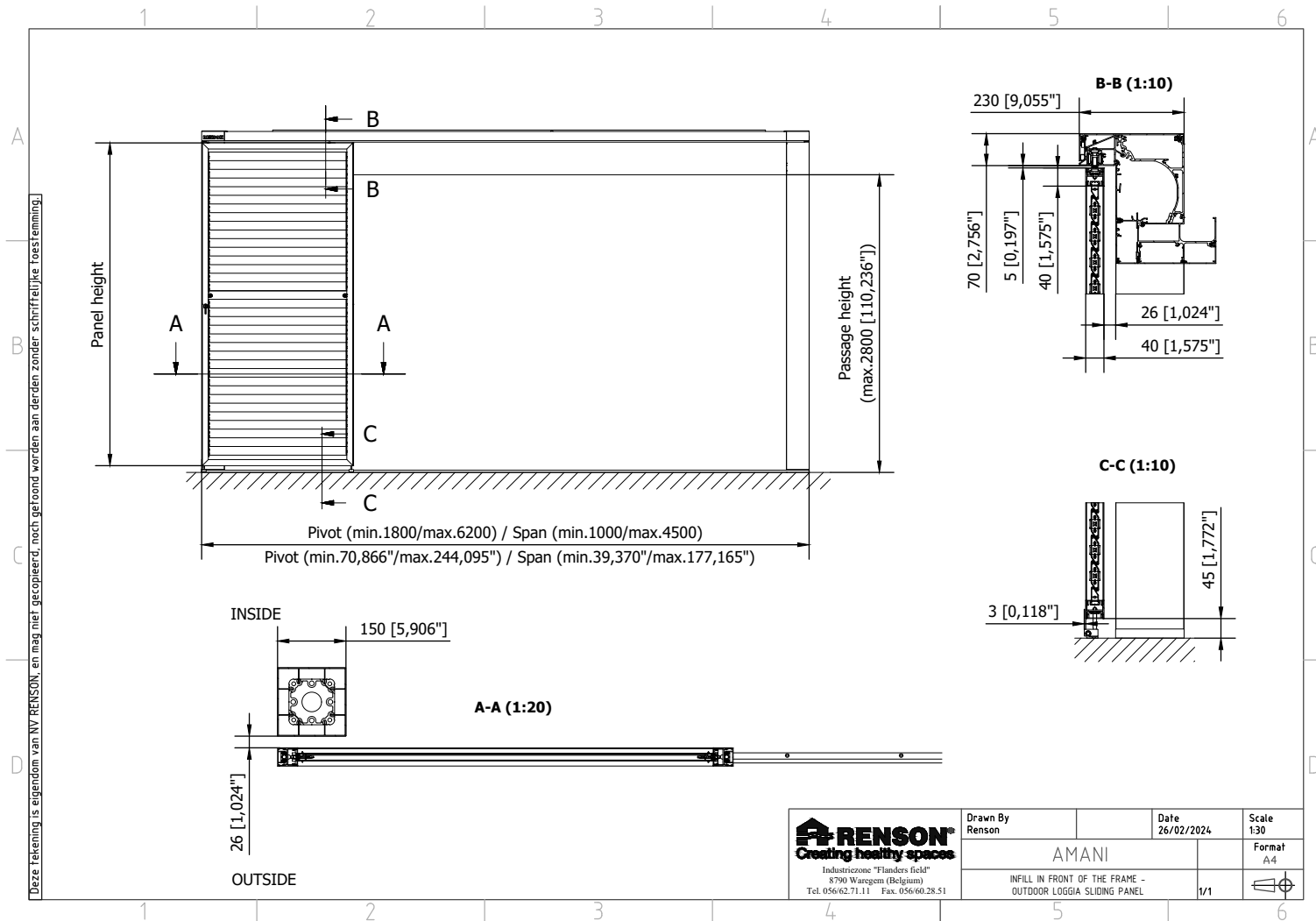


Download this drawing DWG

Download this drawing PDF



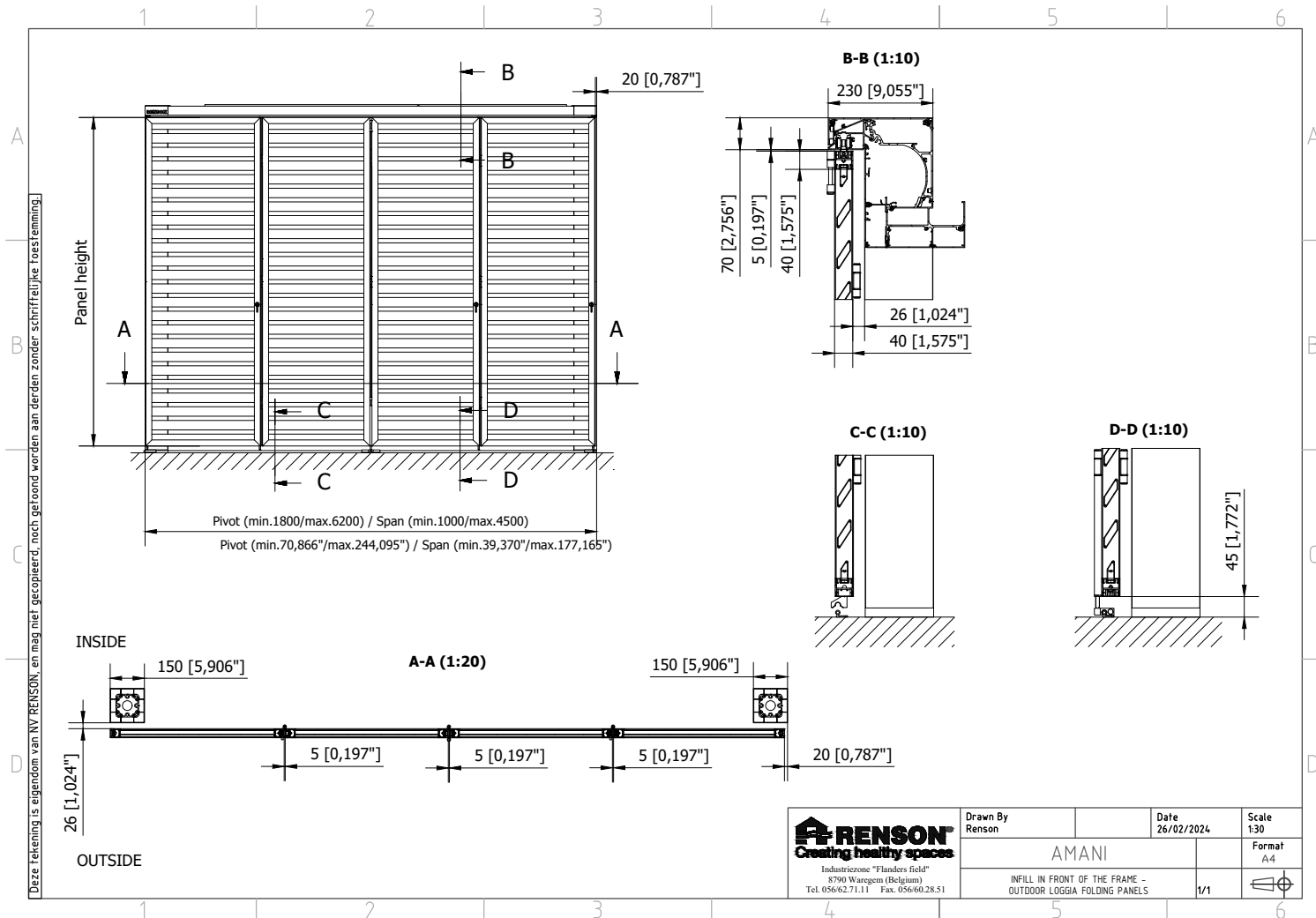
# Amani - INFILL IN FRONT OF THE FRAME - OUTDOOR LOGGIA - SLIDING PANEL



Download this drawing DWG

Download this drawing PDF

# Amani - INFILL IN FRONT OF THE FRAME - OUTDOOR LOGGIA - FOLDING PANELS



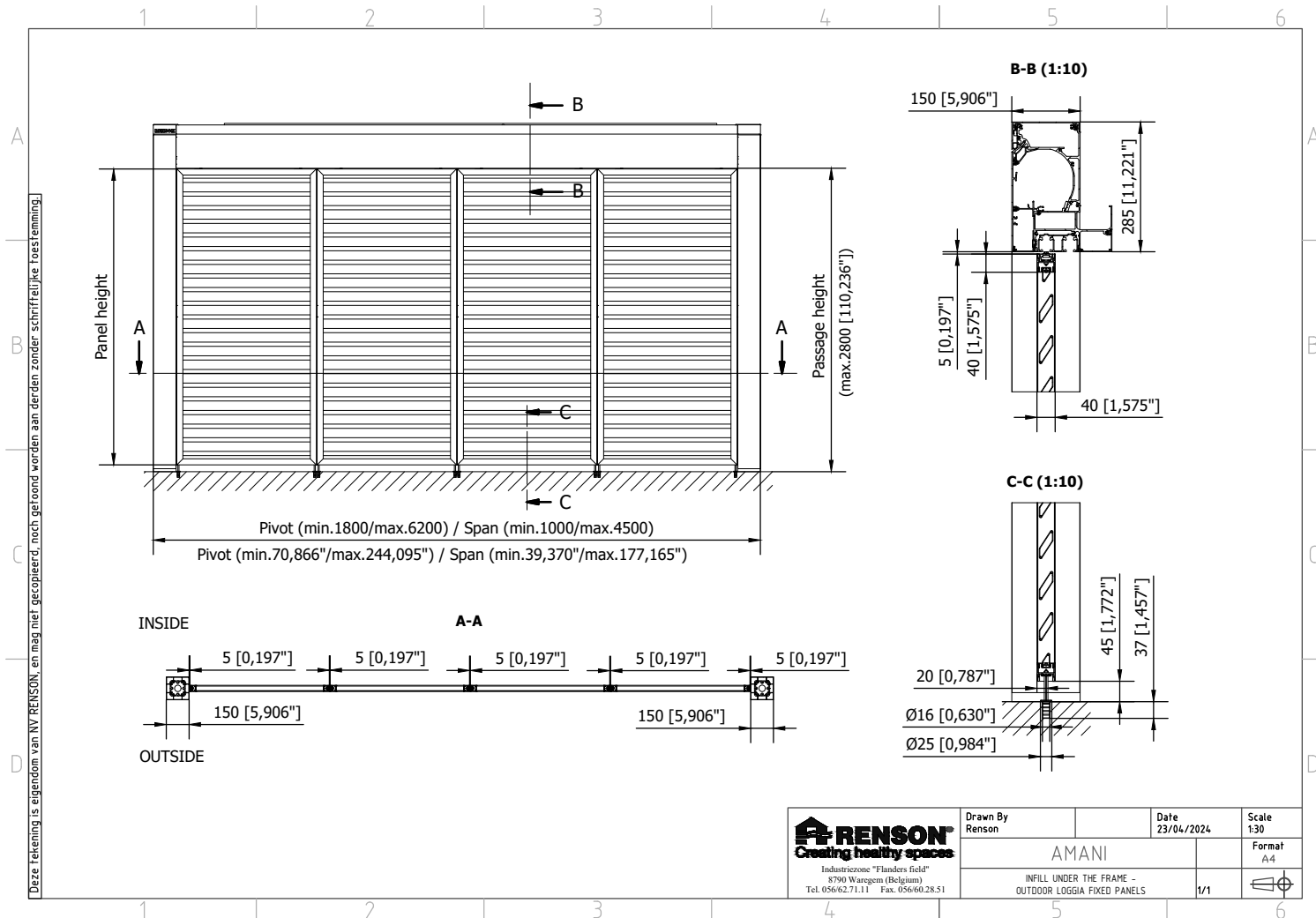
Deze tekening is eigendom van NV RENSON, en mag niet gecopieerd, noch getoond worden aan derden zonder schriftelijke toestemming.

|   |                    |                    |               |
|---|--------------------|--------------------|---------------|
| <br>Industriezone "Flanders Field"<br>8790 Waregem (Belgium)<br>Tel. 056/62.71.11 Fax. 056/60.28.51 | Drawn By<br>Renson | Date<br>26/02/2024 | Scale<br>1:30 |
|   | AMANI              |                    | Format<br>A4  |
| INFILL IN FRONT OF THE FRAME -<br>OUTDOOR LOGGIA FOLDING PANELS                                     |                    | 1/1                |               |

Download this drawing DWG

Download this drawing PDF

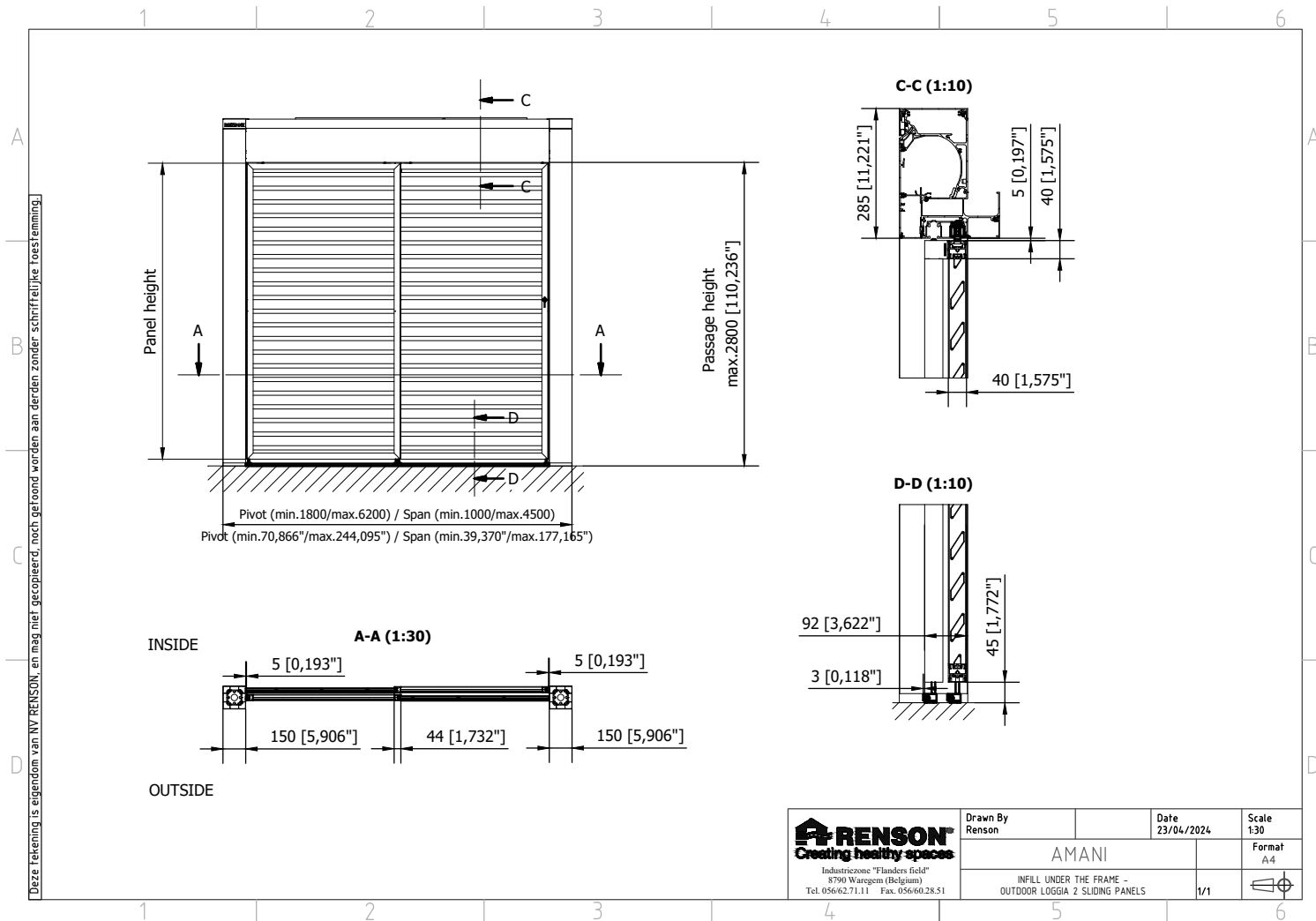
# Amani - INFILL UNDER THE FRAME - OUTDOOR LOGGIA - FIXED PANELS



Download this drawing DWG

Download this drawing PDF

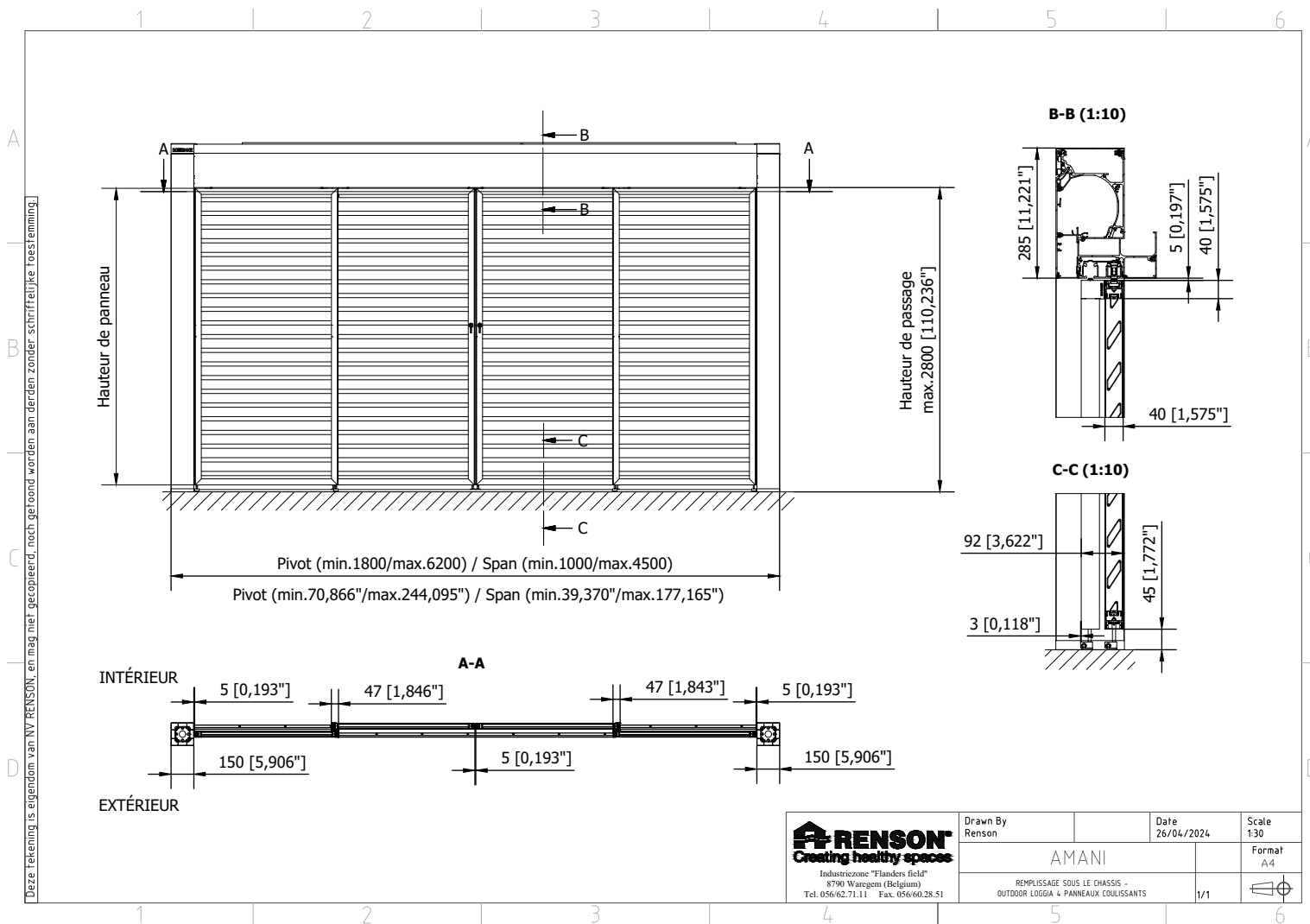
# Amani - INFILL UNDER THE FRAME - OUTDOOR LOGGIA - 2 SLIDING PANELS



Download this drawing DWG

Download this drawing PDF

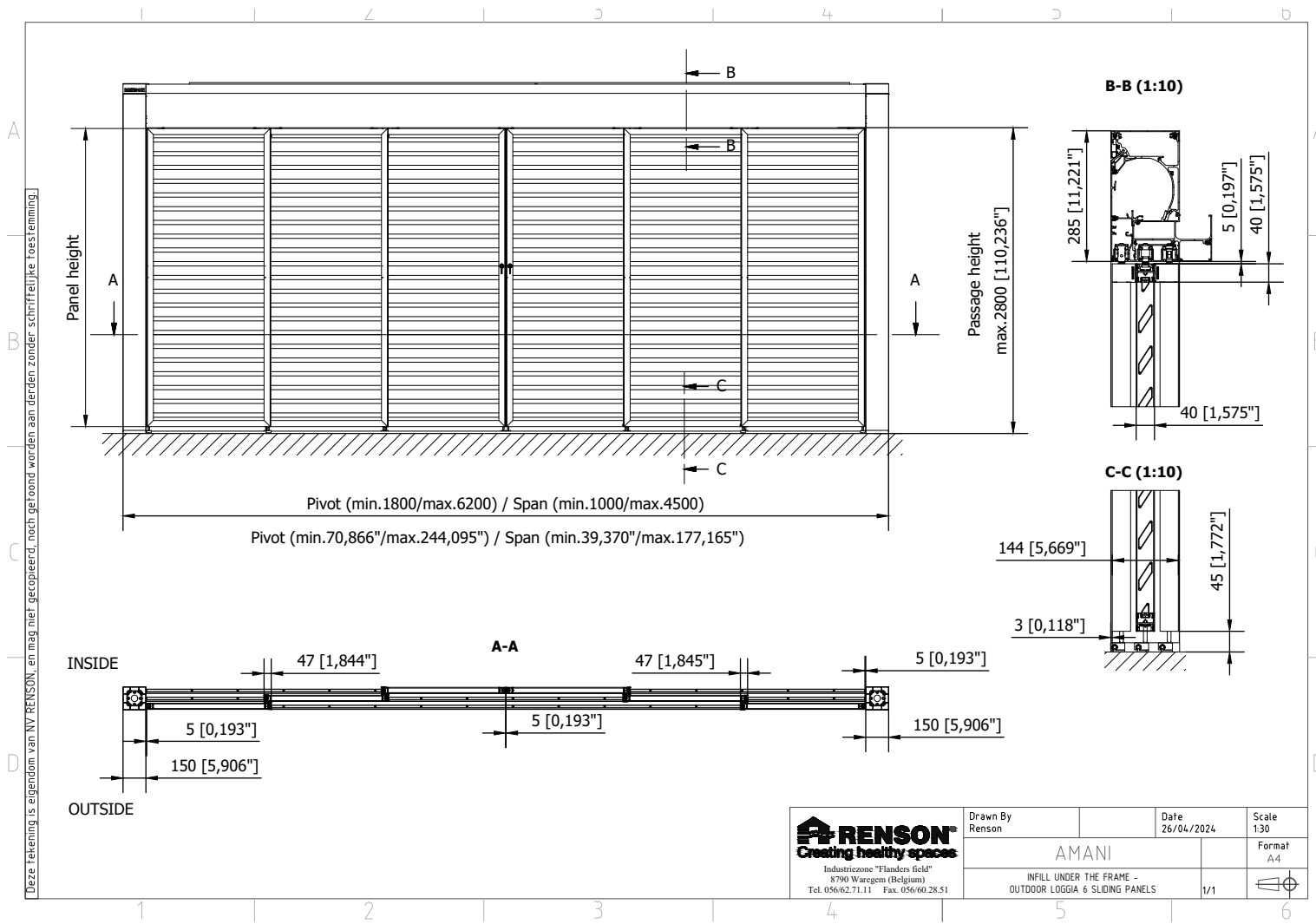
# Amani - INFILL UNDER THE FRAME - OUTDOOR LOGGIA - 4 SLIDING PANELS



Download this drawing DWG

Download this drawing PDF

# Amani - INFILL UNDER THE FRAME - OUTDOOR LOGGIA - 6 SLIDING PANELS



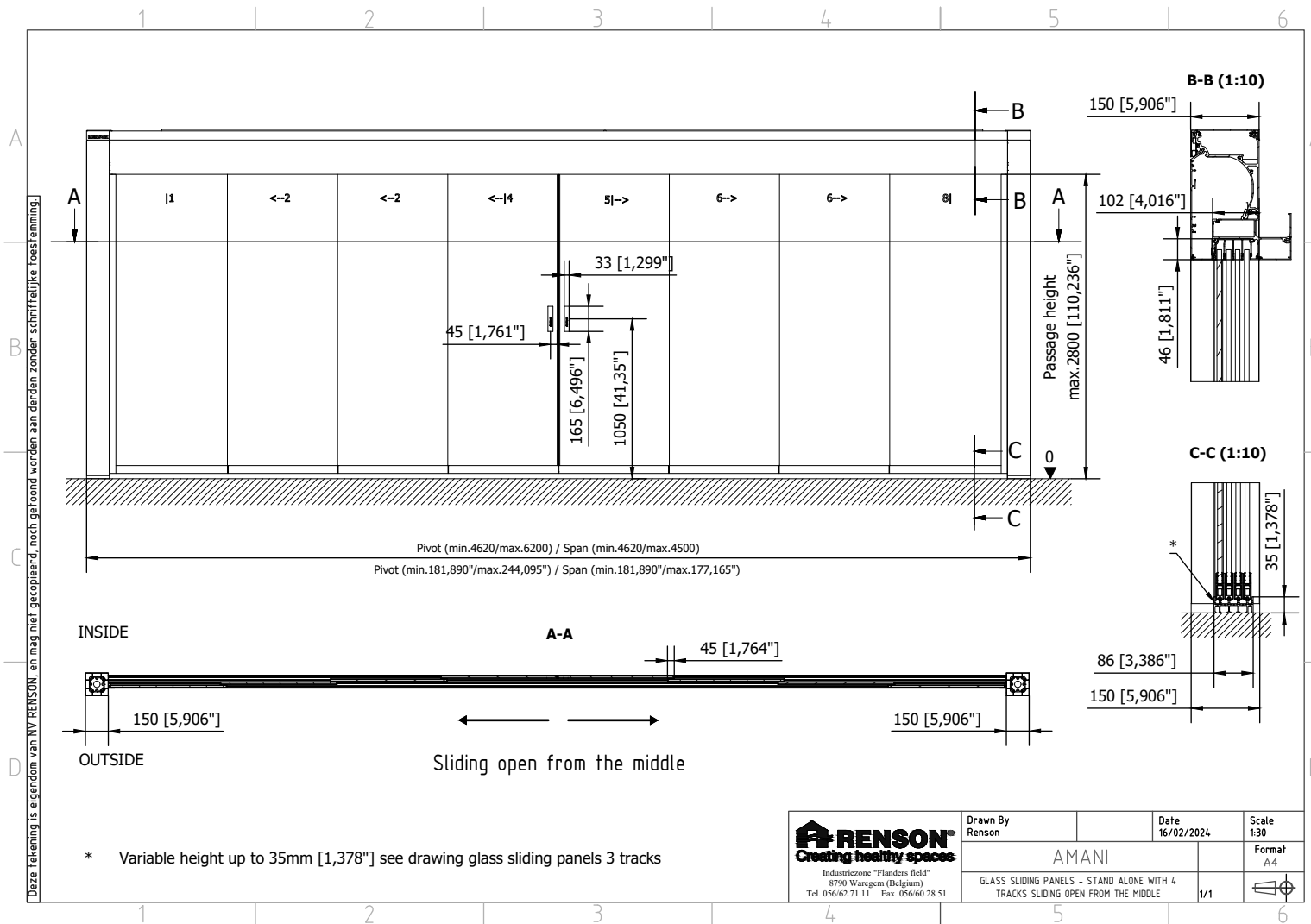
Deze tekening is eigendom van NV RENSON, en mag niet gecopieerd, noch getoond worden aan derden zonder schriftelijke toestemming.

Download this drawing DWG

Download this drawing PDF



# Amani - GLASS SLIDING PANELS - STAND ALONE WITH 4 TRACKS

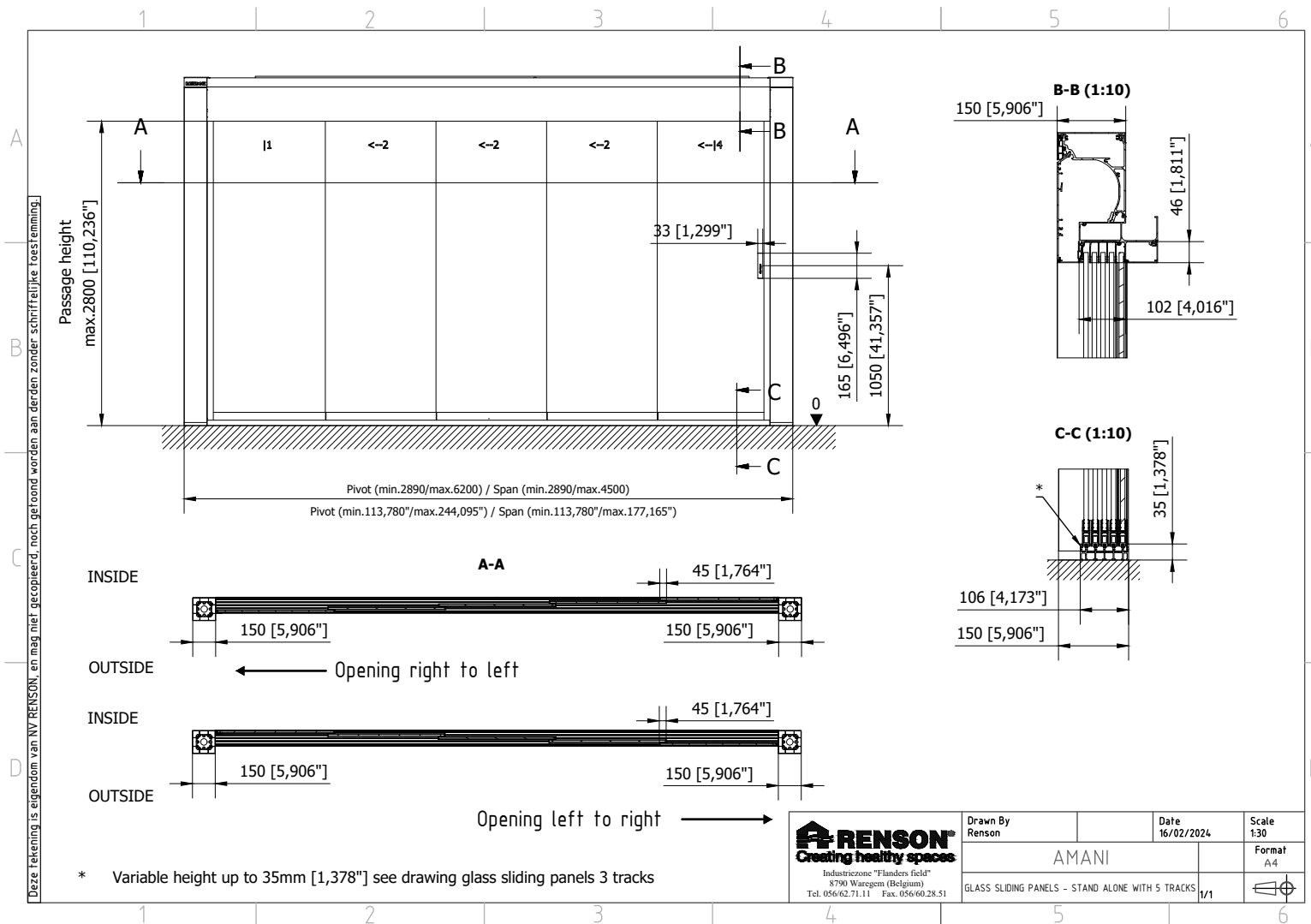


Download this drawing DWG

Download this drawing PDF



# Amani - GLASS SLIDING PANELS - STAND ALONE WITH 5 TRACKS

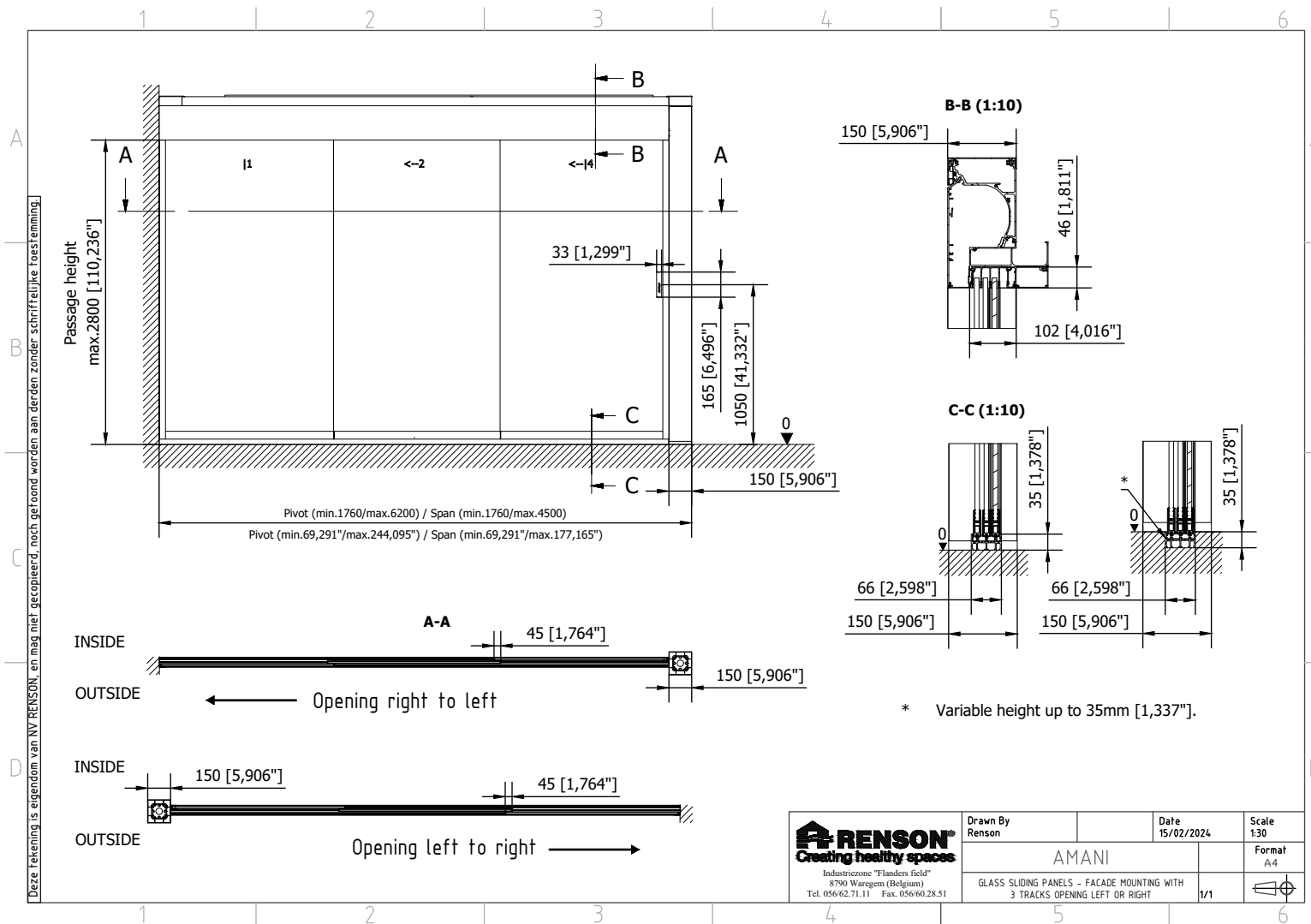


Download this drawing DWG

Download this drawing PDF



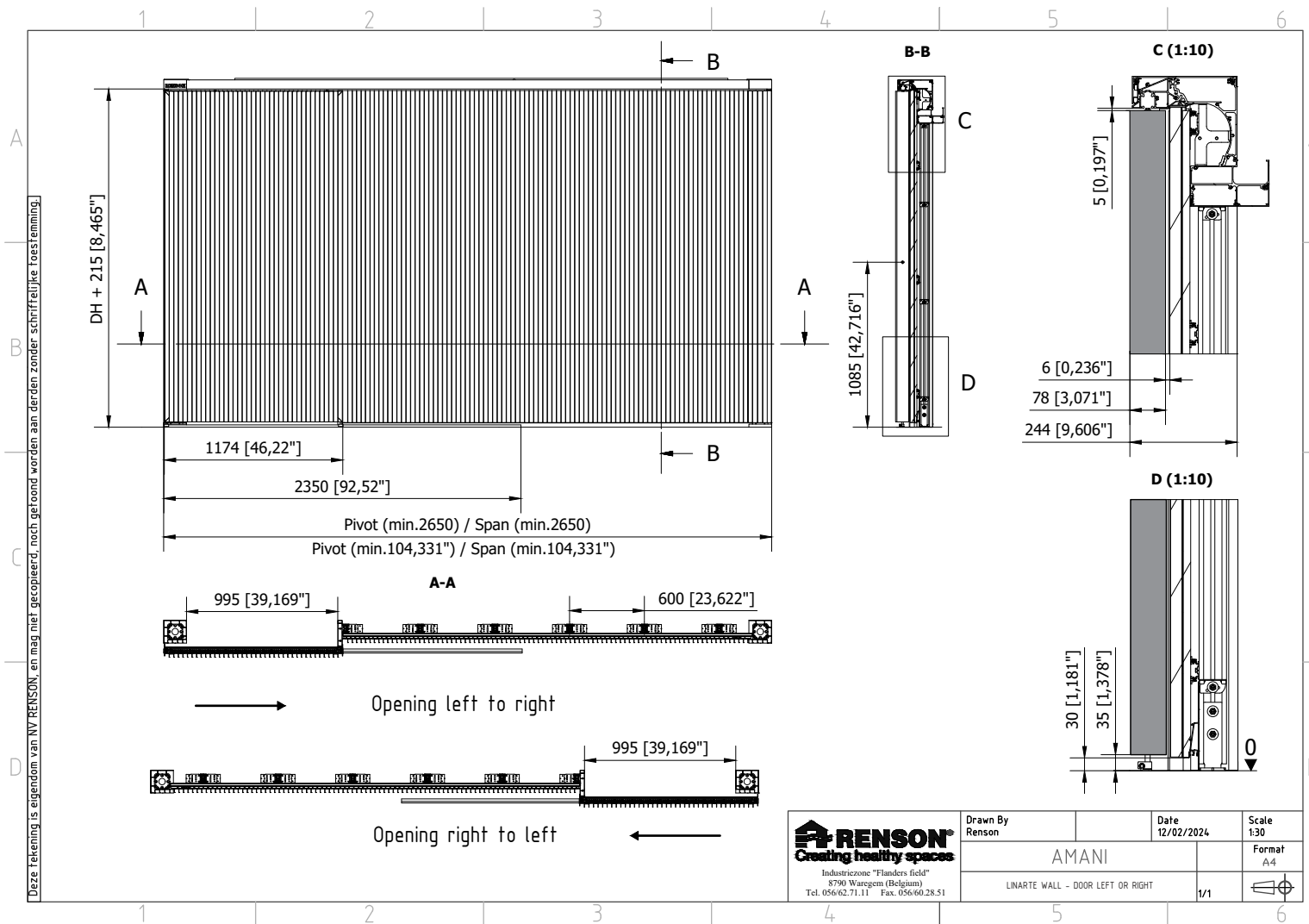
# Amani - GLASS SLIDING PANELS - FACADE MOUNTING WITH 3 TRACKS



Download this drawing DWG

Download this drawing PDF

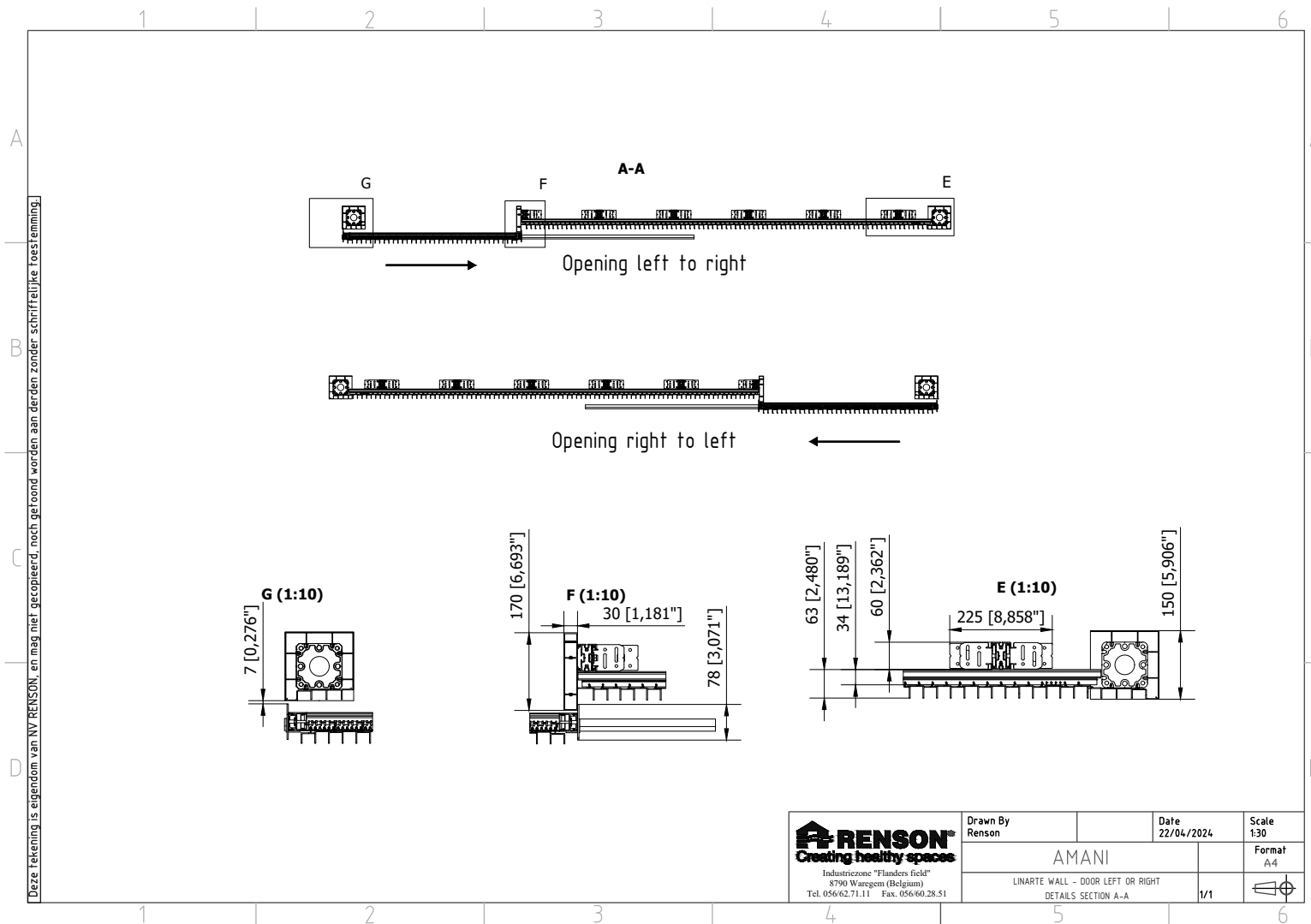
# Amani - LINARTE WALL WITH DOOR LEFT/RIGHT



Download this drawing DWG

Download this drawing PDF

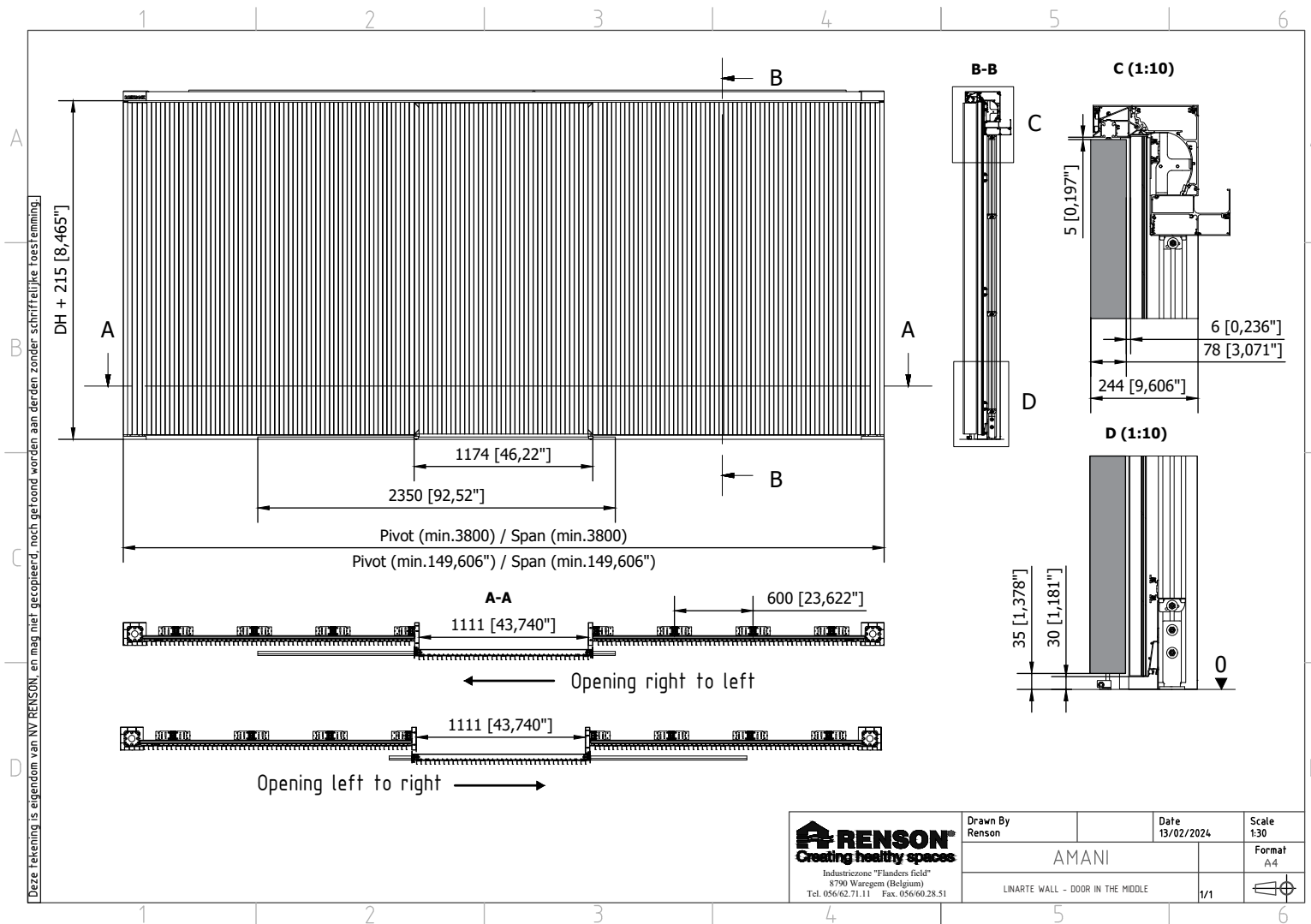
# Amani - LINARTE WALL WITH DOOR LEFT/RIGHT - DETAILS



Download this drawing DWG

Download this drawing PDF

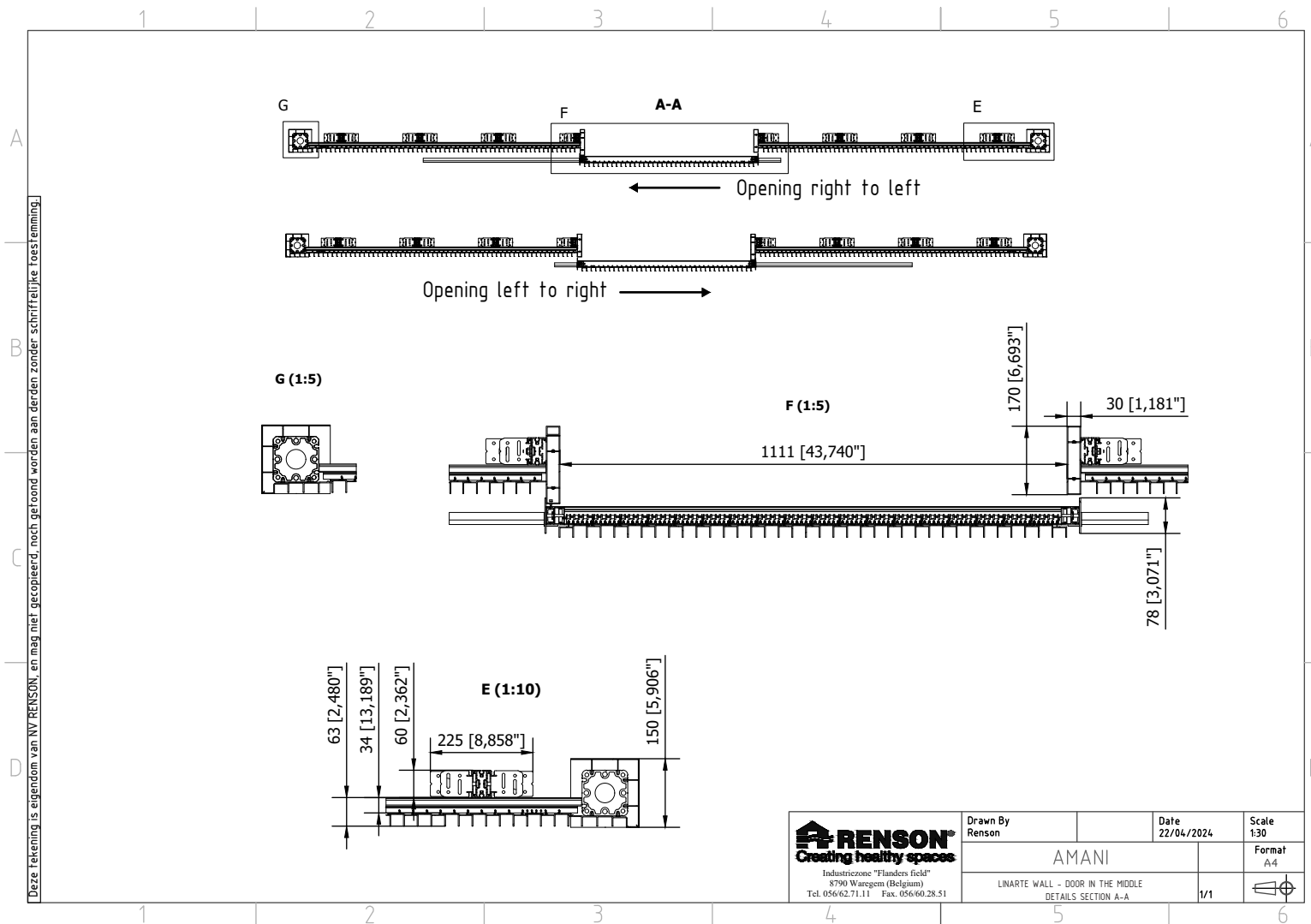
# Amani - LINARTE WALL WITH DOOR IN THE MIDDLE



Download this drawing DWG

Download this drawing PDF

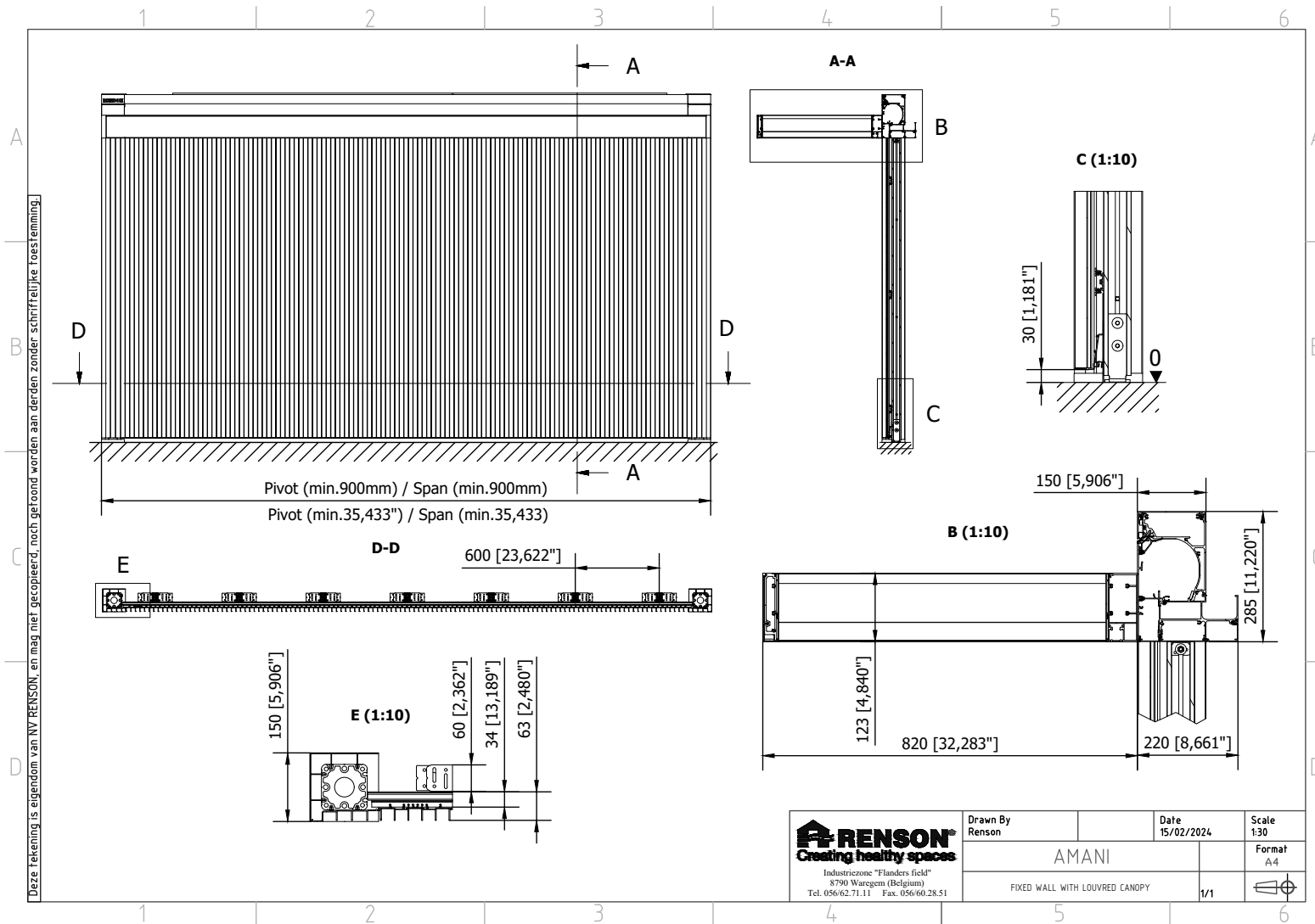
# Amani - LINARTE WALL WITH DOOR IN THE MIDDLE - DETAILS



Download this  
drawing DWG

Download this  
drawing PDF

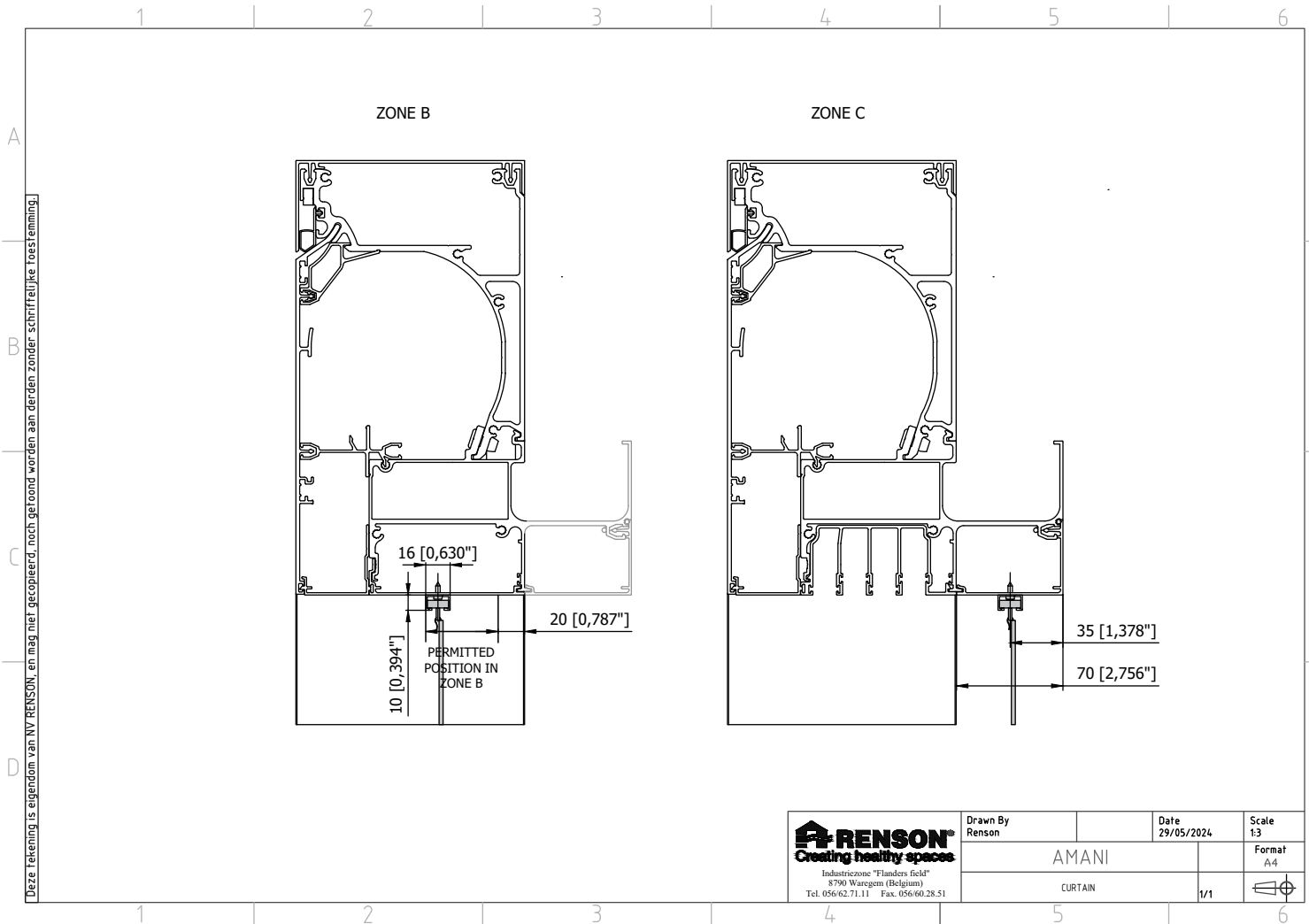
# Amani - LINARTE WALL WITH LOUVRED CANOPY



Download this drawing DWG

Download this drawing PDF

# Amani - CURTAIN



Download this drawing DWG

Download this drawing PDF